



GENUINE ACCESSORIES

INSTALLATION INSTRUCTIONS

PART NUMBERS:

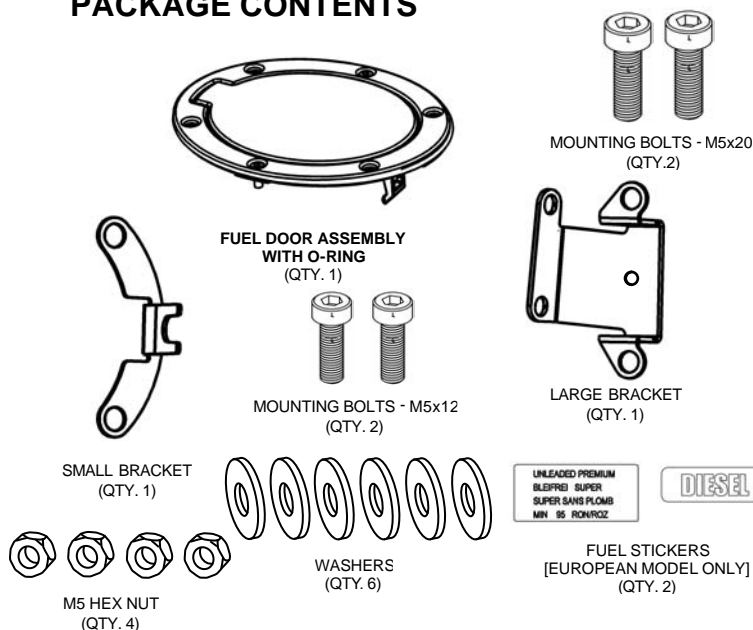
0000 8R H01C (Satin Finish); 0000 8R H03 (Chrome);
0000 8R H05C (European Model Satin Finish);
0000 8R H06C (European Model-Chrome Finish)

Fuel Door

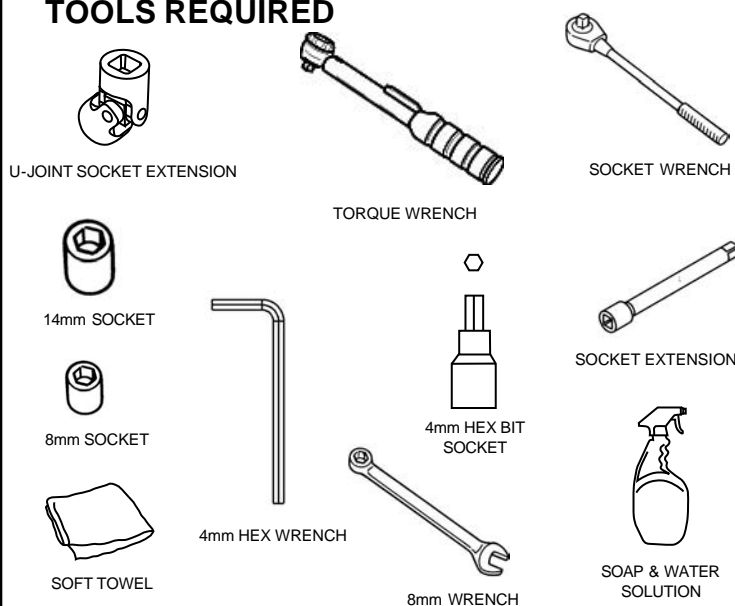
APPLICABLE MODELS:

2003>Mazda6

PACKAGE CONTENTS



TOOLS REQUIRED

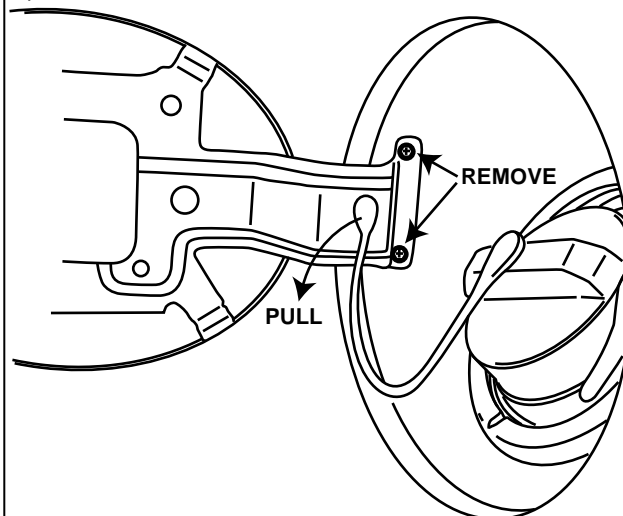


0 BEFORE INSTALLATION

1. READ ENTIRE INSTRUCTIONS BEFORE PROCEEDING.
2. BE CAREFUL NOT TO SCRATCH THE CAR'S PAINT WHILE INSTALLING THE FUEL DOOR.
3. MAKE SURE TO KEEP THE FUEL CAP ON DURING THE ENTIRE INSTALLATION PROCESS
4. HARDWARE KIT AVAILABLE P/N 0000 8R H11A CONTAINS EXTRA BOLTS, WASHERS AND NUTS

1 REMOVAL OF OEM FUEL DOOR

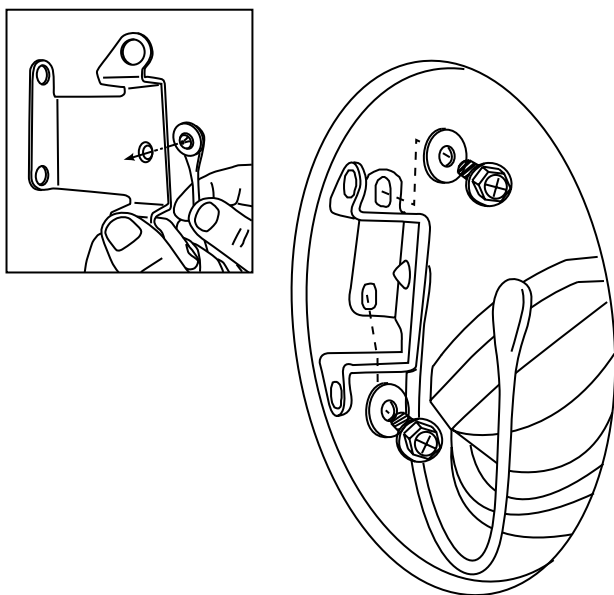
Open the OEM fuel door, keeping the fuel cap on to prevent the bolts from falling down the fuel pipe. Gently remove tether from OEM fuel door by grasping head of tether attached to door and pulling outward. Now, use a 8mm socket wrench with the U-joint extension to remove the two bolts holding the fuel door. Save the bolts for re-assembly. Use a soft towel to clean the fuel door pocket.



NOTE: DO NOT DISCARD THE TWO BOLTS REMOVED. THEY WILL BE USED LATER DURING THE INSTALLATION

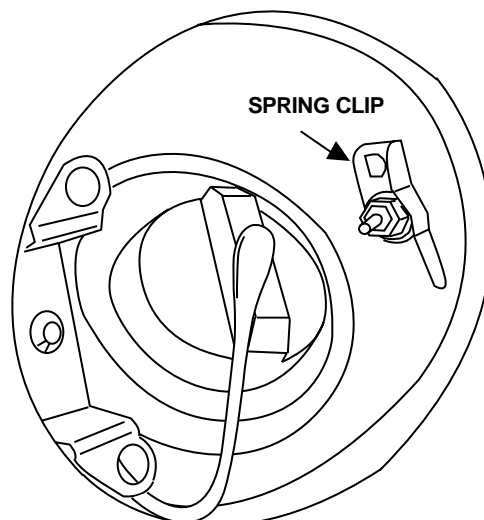
2 MOUNTING THE LARGE BRACKET

Push the head of the tether into the hole provided in the large brackets as shown. Next, carefully insert the large bracket into the OEM fuel door pocket and secure using the two stock bolts removed previously along with two of the supplied washers. Do not tighten the bolts at this time. Allow the bracket to shift freely.



3 REMOVING THE OEM FUEL DOOR SPRING

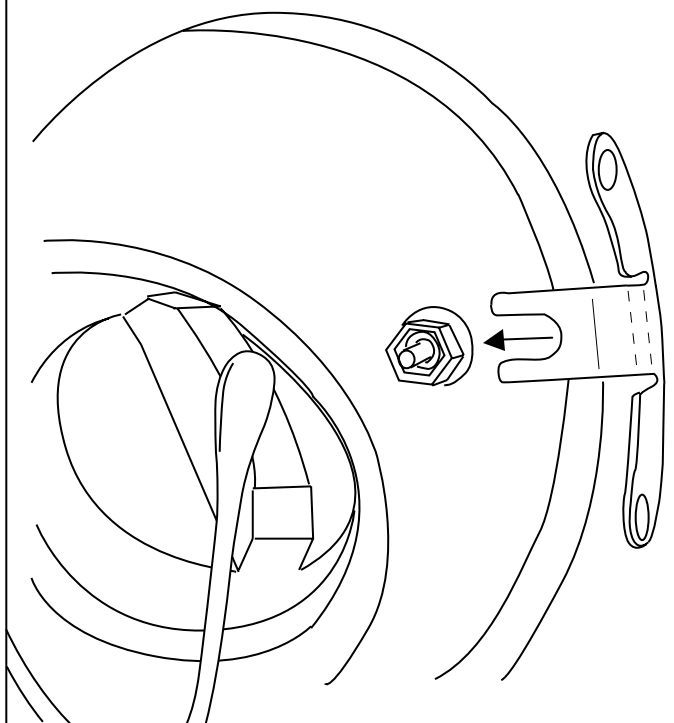
Using the 14mm socket wrench, remove the nut holding the fuel door lock plunger. **BE CAREFUL: THE FUEL DOOR LOCK PLUNGER MAY SLIP INSIDE THE VEHICLE BODY.** Now remove the spring clip and lightly thread the nut back on the plunger leaving a gap for the small bracket to slide between the nut and the wall of the car.



NOTE: DISCARD THE SPRING CLIP THAT WAS REMOVED IT WILL NO LONGER BE NEEDED.

4 MOUNTING THE SMALL BRACKET

Guide the small bracket's fork between the sheet metal and the plunger's nut. **THE BRACKET MUST COME INTO FULL CONTACT WITH THE NUT.** Now hand-tighten the nut, but still allow the bracket to rotate freely.

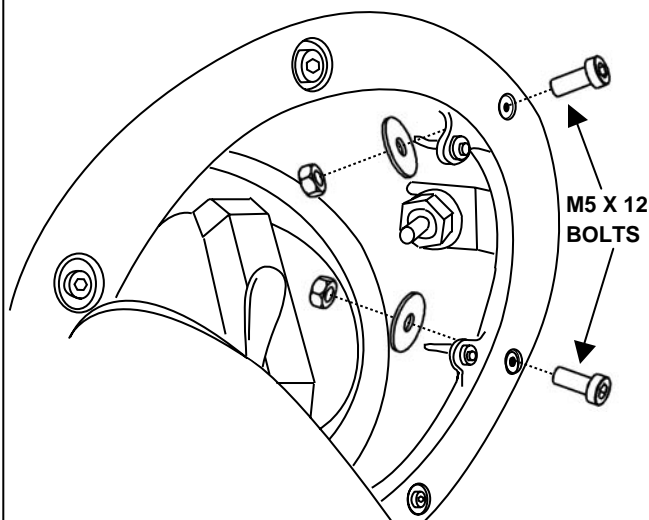


5 ATTACHING THE FUEL DOOR

With the door open (filling position) carefully position the fuel door assembly into place making sure the o-ring does not slip off the accessory fuel door ring.

Use the two M5 X 12 (smaller) bolts along with a washer and a nut to secure the small bracket to the fuel door ring. Do not completely tighten at this time.

Repeat this process (not shown) using the two M5 X 20 (larger) bolts, washers, and nuts for the remaining two holes. Do not completely tighten at this time.

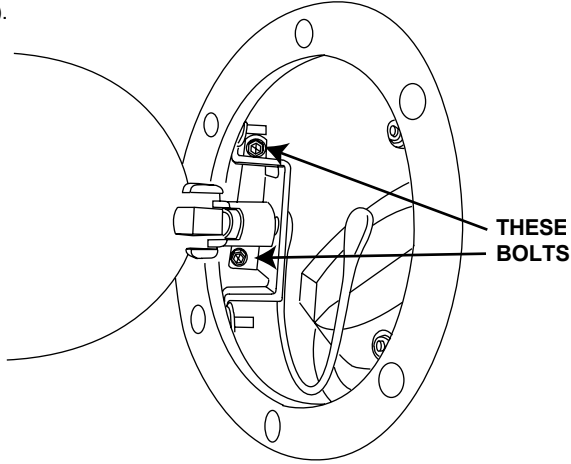


6

ALIGNMENT OF THE FUEL DOOR STEP ONE

NOTE: THE DOOR CAN ROTATE SOME AT THIS POINT, SO TRY TO KEEP THE FUEL DOOR SURFACE ALIGNED WITH THE CAR'S SHEET METAL SURFACE WHILE ADJUSTING THE ALIGNMENT (SEE: DETAIL OF SURFACE ALIGNMENT).

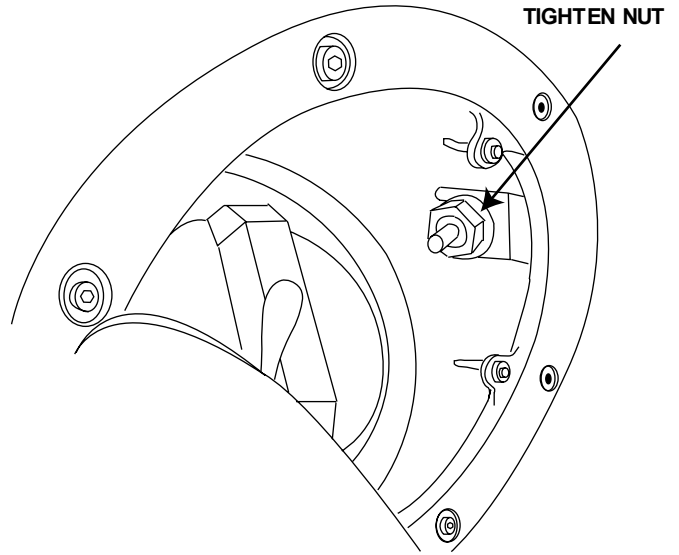
Position the large bracket such that once tightened the fuel door assembly will be positioned symmetrically within the sheet metal and making sure there will not be a step between the sheet metal and fuel door surfaces. Once a good location is determined tighten the bolts that hold the large bracket to the car to a torque of 5.1 N-m (45 in-lbs).



7

ALIGNMENT OF THE FUEL DOOR STEP TWO

Align the fuel door's surface with the car's sheet metal surface so there is no step between the two surfaces (see: Detail of Surface Alignment). Once aligned torque the 14mm nut that secures the lock plunger to 6.9 N-m (61 in-lbs).

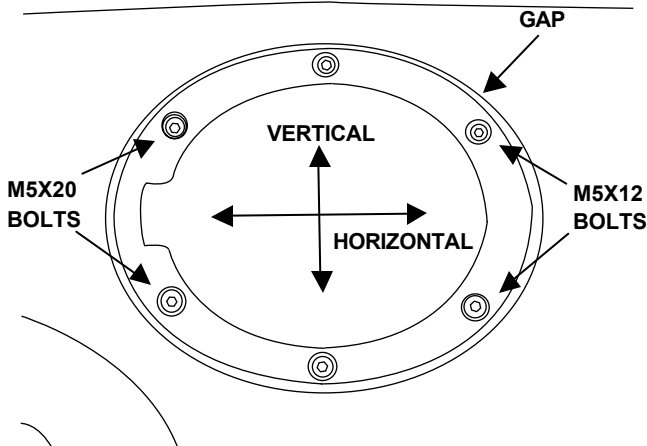


8

ALIGNMENT OF THE FUEL DOOR STEP THREE

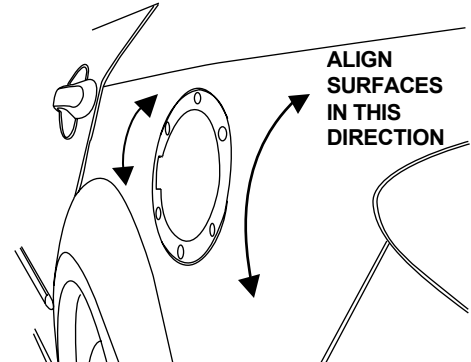
NOTE: THE DOOR CAN ROTATE SOME AT THIS POINT, SO TRY TO KEEP THE FUEL DOOR SURFACE ALIGNED WITH THE CAR'S SHEET METAL SURFACE WHILE ADJUSTING THE ALIGNMENT (SEE: DETAIL OF SURFACE ALIGNMENT).

Align the fuel door vertically and horizontally to have the same gap between the fuel door assembly and the car's sheet metal. To correct the vertical and horizontal gap conditions: 1) loosen the M5X12 and M5X20 bolts, 2) position the fuel door and tighten all bolts to a torque of 1.7 N-m (15 in-lbs).



NOTE: LOOK AT THE GENERAL APPEARANCE OF THE FUEL DOOR AND MAKE SURE NOTHING HAS SHIFTED WHILE TIGHTENING THE BOLTS. IF SHIFTING OCCURRED, USE TECHNIQUES FOUND IN ALIGNMENT OF THE FUEL DOOR STEPS ONE THROUGH THREE TO CORRECT THE CONDITION.

DETAIL OF SURFACE ALIGNMENT



9

FINAL INSPECTION AND CLEANING

- 1) Firmly grasp the fuel door's ring to make sure the assembly is securely fastened to the car.
- 2) Check for proper function of:
 - a. Fuel door lock release
 - b. Opening and closing of fuel door
- 3) Place fuel label stickers in glove box for all fuel doors sold in Europe (Part # 0000 8R H05). The consumer is to prepare the center of the fuel door's underside by cleaning with a soap and water solution and a soft towel. Once dry the appropriate label (Diesel or multi-lingual gasoline) should be applied.
- 4) Use a soap and water solution with a soft towel to wipe any fingerprints and grease away from the fuel door and car's paint.