

INTERNET ARCHIVE

waybackmachine

http://www.mazda6tech.com/index.php?option=com_content&task=view&id=37&Itemid=

Go

SIE LIS CZE

Close

178 captures


29 paź 06 - 29 mar 13

2006 2007 2009

Help

Search forum...

Search articles...



Main Menu

Home

6Tech Forums

How-To

Maintenance

Suspension

Drivetrain


Driving

Miscellaneous

Links

Contact Us

Latest Topics



Home > How-To > Remove Your Front Bumper

Newsflash

Now that the Mazdaspeed6 is out, check the Mazdaspeed forum to see aftermarket product releases and updates!

Remove Your Front Bumper

Written by Administrator

Monday, 29 March 2004

Remove Front

How To Remove Your Front Bumper

By Crossbow

This article goes over the technique/way to remove one's front airdam assembly. The front airdam/bumper is basically a large plastic piece of body cladding, which makes everything in front of the radiator look nice.

Reasons to remove it? Its far easier to install a cold air intake (and ensure its proper installation) with the airdam off. Its also required for any sort of cooler installation (oil/tranny), as otherwise access is extremely restricted. Removing the front airdam also allows access to the headlight assemblies, and the stock ballast mount locations, if you wanted to do a very clean HID install. Other reasons include checking for leaks, hoses, stock locations of items, etc.

Please read all the directions first BEFORE attempting to remove the front bumper/airdam. Also make sure to make note of which parts go where. I used small plastic bags to hold the parts for respective sections to make sure I didn't misplace a screw or other item.

Tools Required:

10mm Socket Ramps or Jack/Jackstand
Phillips Screwdriver Blade/Flathead Screwdriver
Soft Blanket 12mm Socket

Tools Recommended:


20-24 inch (Long) Phillips Screwdriver
A Second Set of Hands
Plastic Bag's For Parts

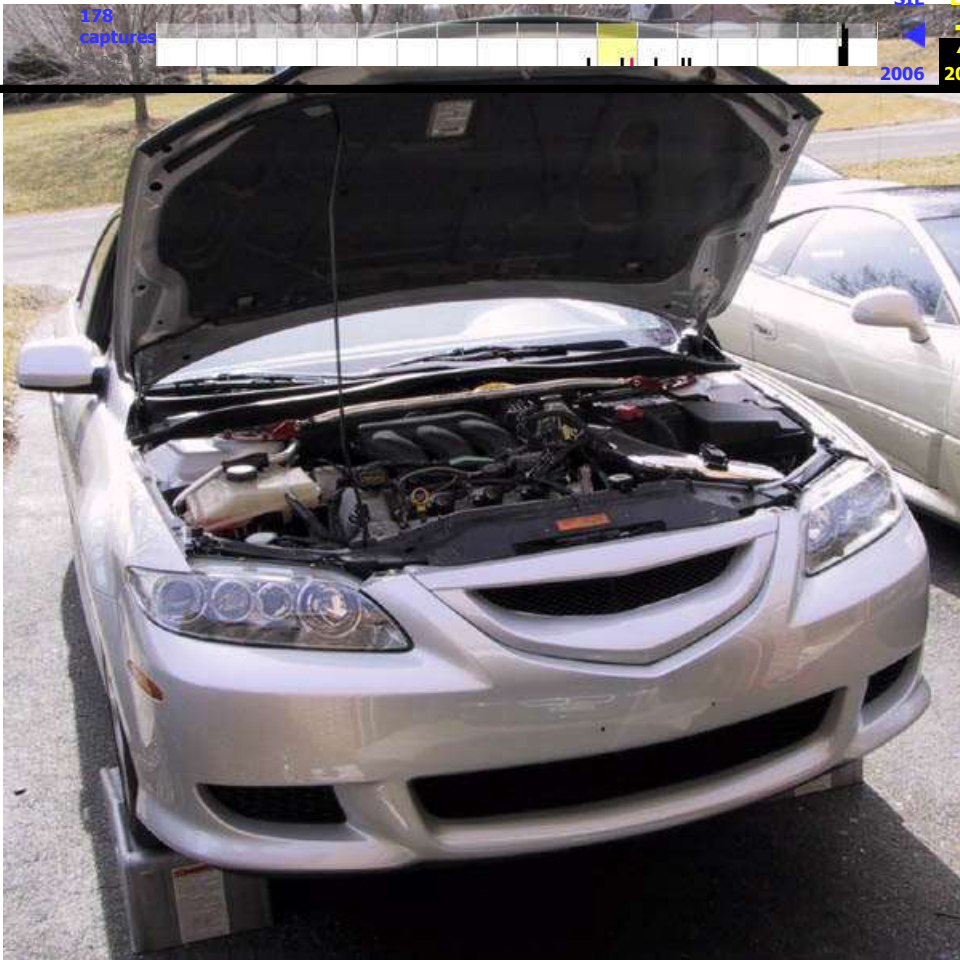
Donate

Support Mazda6Tech in making a small donation:

Make a Donation

Google





Step 1: Drive the car up some ramps, or jack it up and use jackstands. Make sure to put a chock behind the rear wheels as an added safety measure. ALWAYS use jackstands if your using a hydraulic jack. Though popping the hood isn't necessary, it helps let additional light into the engine bay, making it easier to work under the car.



Step 2: Remove the front grill. There are two screws, and four tabs. The screw's are circled in this photo, and the tabs are pretty self explanatory, but will be pointed out in a later photo. Though this is a non standard grill (SpecR AutoExec Front Grill), the standard mazda chrome mustache and sports grill remove in the same manner.



http://www.mazda6tech.com/index.php?option=com_content&task=view&id=37&Itemid=1 Go

178 captures

29 mar 2007

SIE LIS CZE
2006 7 2009

Close

Help



Step 3: This is where the blanket/soft thing comes in handy. This is where you'll be putting the pieces of your car. Its soft and cozy for all your plastic urethane needs.



Step 4: Remove the two screws adjacent to the front grill screws. Here they are clearly marked with red circles. These screws are basically the little plastic insert types that are in the wheel wells. You can also see the four tab holes in the bottom of where the front grill used to mount.



Step 5: Remove the three lowest plastic clips in each wheel well. (Thats six total). These clips strip EXTREMELY easily. You might want to try removing them before going up on the ramps if their stripped from previous installs. On my drivers side, they were so stripped, I had to pop them out from the inside-out, but performing step 6 first, and then poppin out the tabs from the inside.

*dawei213 suggests...Also for them plastic screw on the underside of the wheel wells, I figured out that if you just twist them with a philip's head without much force at all, the screw will pop from the base and then it's easy to remove it. Learned that after stripping two of them. Just use a **small amount** of force.*



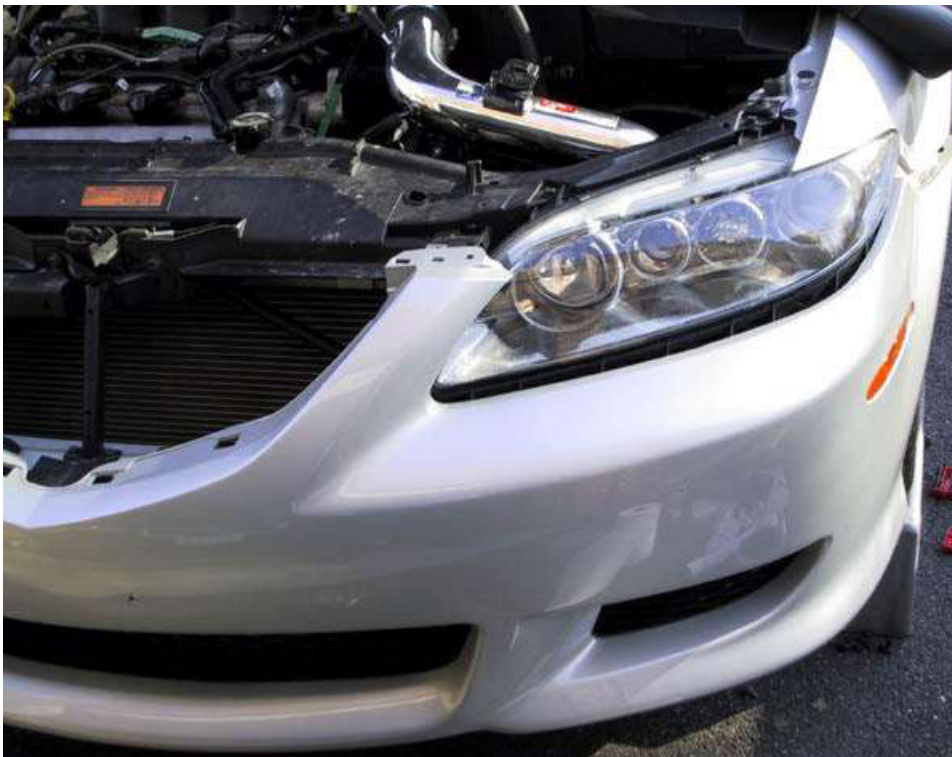
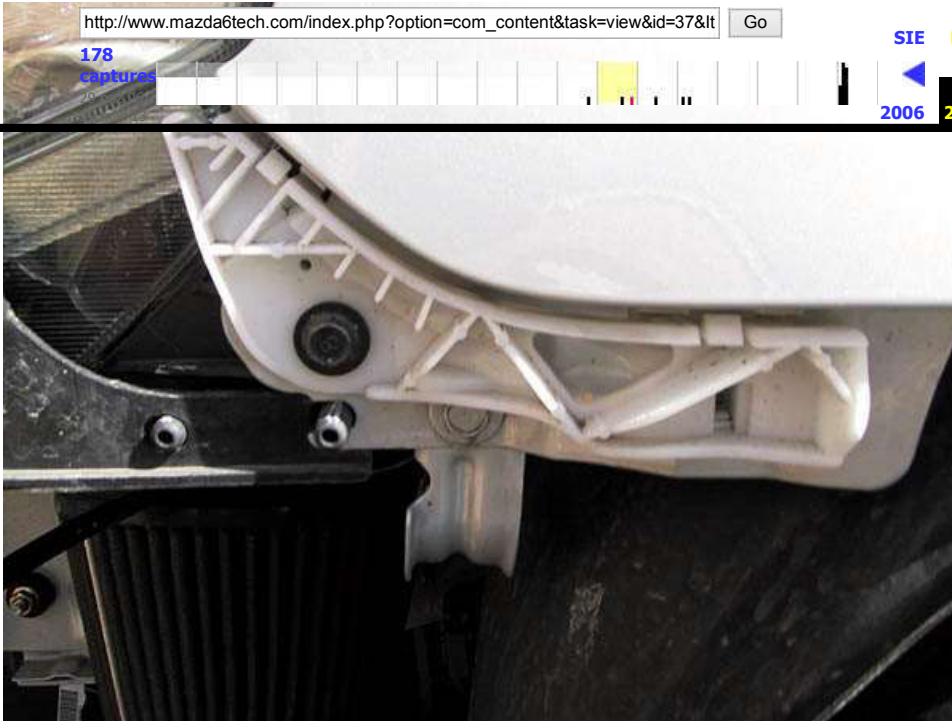
Step 6: Remove the screws on the bottom of the wheel well. (*This is under the car in front of each wheel*). If you are having trouble with Step 5 (*due to stripped plastic*) you can perform this step first, and then pop the inserts out by pulling the lower liner down, and access them from the inside out (*popping them out*). Remember this must be done on BOTH sides.



Step 7: Remove the two main center bolts. These are directly next to the end of the liner screws (under the car) as seen in the photo. These require the slightly larger socket, and are basically the main supports for the entire lower section of the bumper.



Step 8: This is the hard part. There are two screws remaining that are holding the bumper in place. These are located as show in the image, UNDER the wheel well liner. (Above the three plastic inserts you removed). This screw is very difficult to get to, as the wheel liner must be pry'd back to gain access to it. This is where an extra long phillips screwdriver comes in handy. Allows much easier access to the internal screw. Once both of these screws are removed, your ready to remove the front bumper.



Step 9: Now you're ready to physically remove the bumper. On the side of the bumper, where it intersects the side panel, there is a plastic clip locking system which is the last thing holding the bumper in. With gentle pressure, pull the sides out of the clip (on either end). If you do this correctly, the bumper won't suddenly drop to the ground. Make sure when removing the bumper to **DISCONNECT the side reflector lights**.



If you're worried about the bumper falling, have a second individual watch it as you pull the sides out of the clips. Carefully continue pulling the bumper off, and place it on the soft material you prepared earlier.

INTERNET ARCHIVE

Wayback Machine

http://www.mazda6tech.com/index.php?option=com_content&task=view&id=37&Itemid=37 Go

176 captures

29 paź 06 - 29 mar 13

SIE LIS CZE

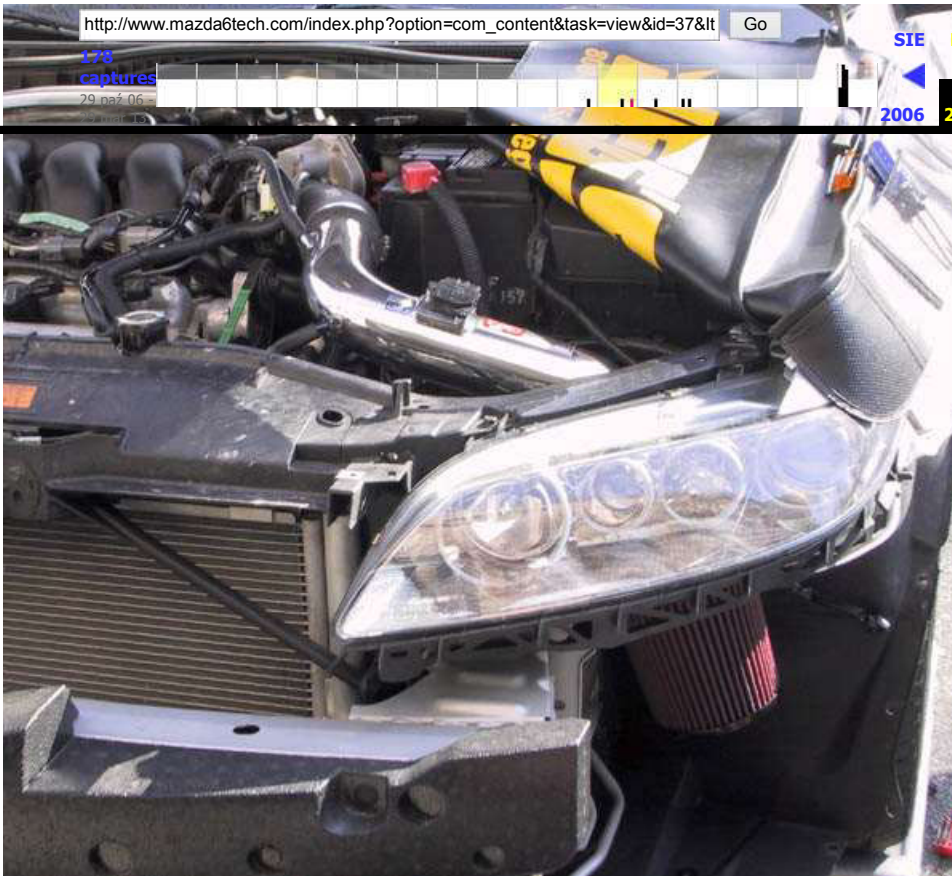
2006 2007 2009

7

Close

Help





Step 10: Perform the work that originally required the removal of the bumper for. When reversing the process, take your time to remount the bumper BEFORE screwing items in. The side clips and top two screws can be used to hold the bumper in place while you align everything, and make sure everything is correctly positioned. Make sure to **PLUG the side reflector lights back in**. Though this article is quite lengthy, the process is actually pretty quick, barring the two screws which must be accessed via prying the wheel well out of the way.

If you have any questions, or want additional photos of the process, please feel free to pm me. Thanks to dawei213 for the suggestions! (As well as pointing out a grave error in one section)

< Prev

Next >

[Back]



Copyright 2000 - 2005 Miro International Pty Ltd. All rights reserved.
Mambo is Free Software released under the GNU/GPL License.