

VEHICLE IDENTIFICATION NUMBER (VIN) CODE [(E)]

id0000001002x2

European (L.H.D. U.K.) specs.

J M Z B P 6 S A 6 0 0 1 2 3 4 5 6	
Serial No.	
Plant	0= Hiroshima 1= Hofu
Dummy	0
Transmission type	6= 6MT A= 6AT
Engine type	A= 1.5 L (SKYACTIV-G 1.5) 7= 2.0 L (SKYACTIV-G 2.0 (WITHOUT CYLINDER DEACTIVATION)) E or G= 2.0 L (SKYACTIV-G 2.0 (WITH CYLINDER DEACTIVATION)) H= 2.0 L (SKYACTIV-X 2.0) 8= 1.8 L (SKYACTIV-D 1.8)
Body style	S= 4SD H= 5HB
Drive axle	5 or 6= 2WD E or F= AWD
Series	P = Europe including Russia
Carline, series	B= MAZDA 3
World manufacturer identification	JMZ or JM4 = Europe

am3zzw00036881

Australian specs.

J M 0 B P 2 S 7 6 0 0 1 2 3 4 5 6	
Serial No.	
Plant	0 = Hiroshima 1 = Hofu
Dummy	0
Transmission type	6= 6MT A= 6AT
Engine type	7= 2.0 L (SKYACTIV-G 2.0) L= 2.5 L (SKYACTIV-G 2.5) H= 2.0 L (SKYACTIV-X 2.0)
Body style	S= 4SD H= 5HB
Drive axle	2= 2WD
Carline, series	BP= MAZDA 3
World manufacturer identification	JM0= Australian specs. Mazda-Japan

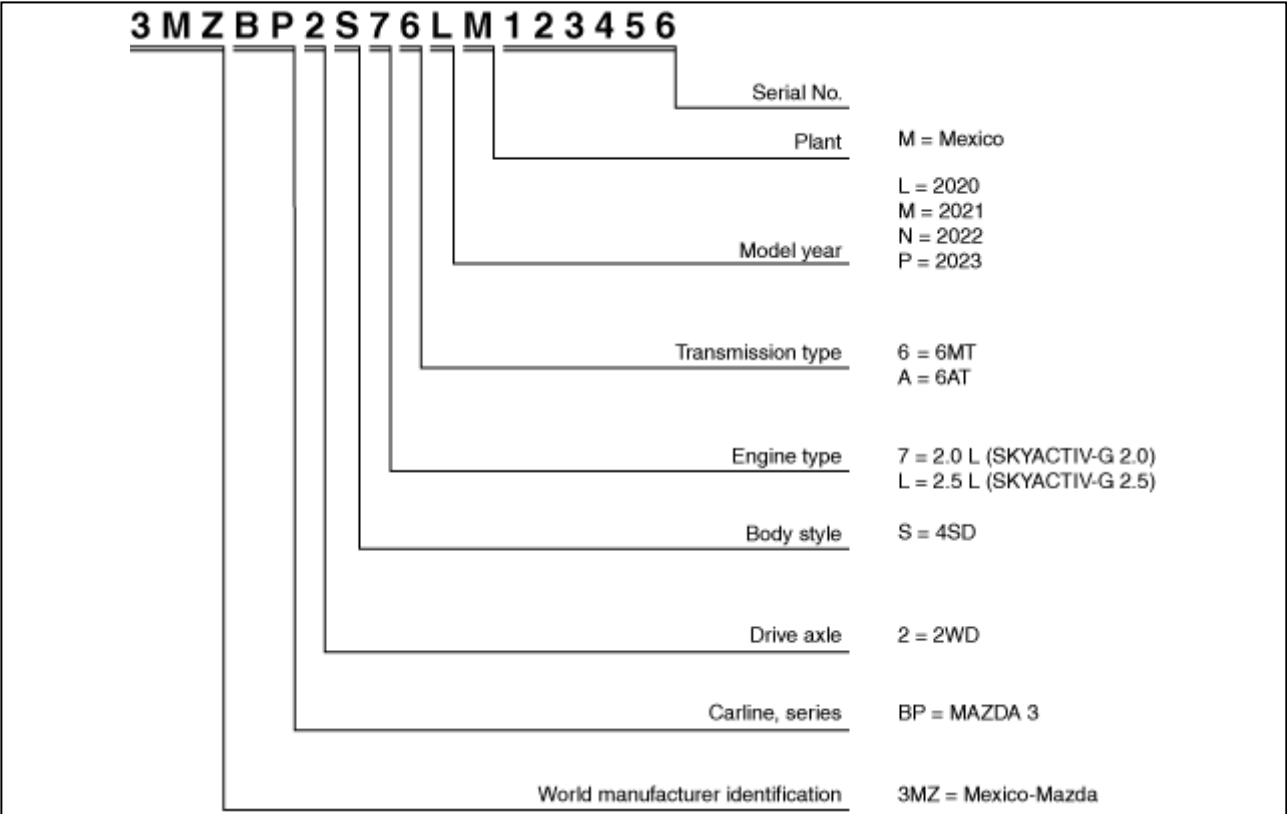
am3zzw00036453

General (L.H.D.) specs.

Except Mexico manufactured vehicles

J M 7 B P 2 S 7 6 L 0 1 2 3 4 5 6											
										Serial No.	
										Plant	
										0 = Hiroshima	
										1 = Hofu	
										L = 2020	
										M = 2021	
										N = 2022	
										P = 2023	
										Z = Israel	
										0 = Taiwan	
										6 = 6MT	
										A = 6AT	
										0 to 9, X	
										7 = 2.0 L (SKYACTIV-G 2.0)	
										A = 1.5 L (SKYACTIV-G 1.5)	
										L = 2.5 L (SKYACTIV-G 2.5)	
										H = 2.0 L (SKYACTIV-X 2.0)	
										H = 5HB	
										S = 4SD	
										2 = 2WD (Except for Israel)	
										4 = AWD (Except for Israel)	
										6 = 2WD (For Israel)	
										A = Driver, passenger, curtain and side air bag	
										BP = MAZDA 3	
										For Israel:	
										JMZ = Japan-Mazda	
										Except for Israel:	
										JM7 = Japan-Mazda	

Mexico manufactured vehicles



General (R.H.D.) specs.

J M 6 B P 2 S 7 6 K 0 1 2 3 4 5 6												
											Serial No.	
											Plant	0 = Hiroshima 1 = Hofu
											For the following countries (*): Model year	K = 2019 L = 2020 M = 2021 N = 2022
											Indonesia: Calendar year	J = 2018 K = 2019 L = 2020 M = 2021 N = 2022
											Except above: Dummy	
											Transmission type	A = 6AT 6 = 6MT
											Engine type	7 = 2.0 L (SKYACTIV-G 2.0) A = 1.5 L (SKYACTIV-G 1.5) H = 2.0 L (SKYACTIV-X 2.0)
											Body style	S = 4SD H = 5HB
											Drive axle	2 = 2WD
											Carline, series	BP = MAZDA 3
											World manufacturer identification	JM6 = Japan-Mazda

*: Jamaica, Bermuda, Barbados, Grenada, St.Lucia, St.Vincent, Antigua, Surinam,Trinidad & Tobago, Commonwealth of Dominica

Thailand specs.

