

AUTOMATIC GEAR KNOB REMOVAL

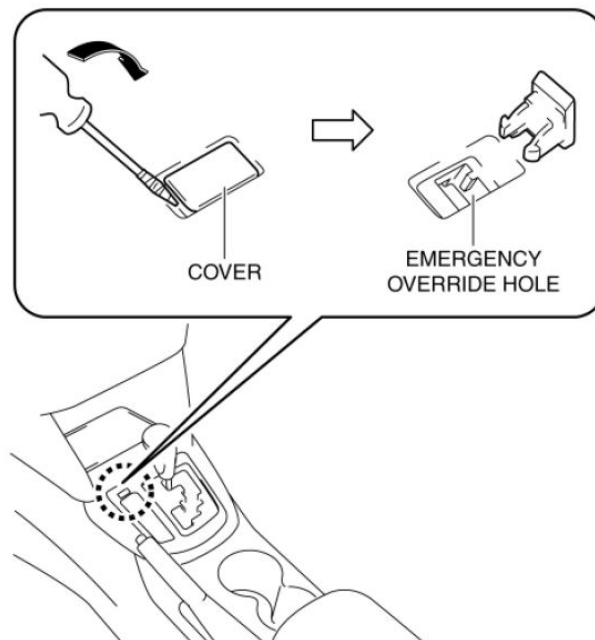
This is a manual/report on how to remove the automatic gear knob - as showcase at a Mazda CX-5 KE/GH 2016 (left hand drive). It also applies to other Mazda models with the same automatic gear knob. The removal of the manual gear knob is different and often can be done by just spinning/twisting/rotating the upper end.

Preparation:

Official Mazda manual states to disconnect the negative battery cable before the removal of the automatic gear knob. Technically it is possible without that.

For having the most room to work, I recommend to move the gear knob to D/Drive/fully backwards. This could be done e.g. via the emergency override hole (as shown below in the sketch of a CX-5 KE/GH 2013) while the ignition is off. This also works with disconnected negative battery cable:

4. Remove the emergency override hole cover using a tape-wrapped flathead screwdriver.



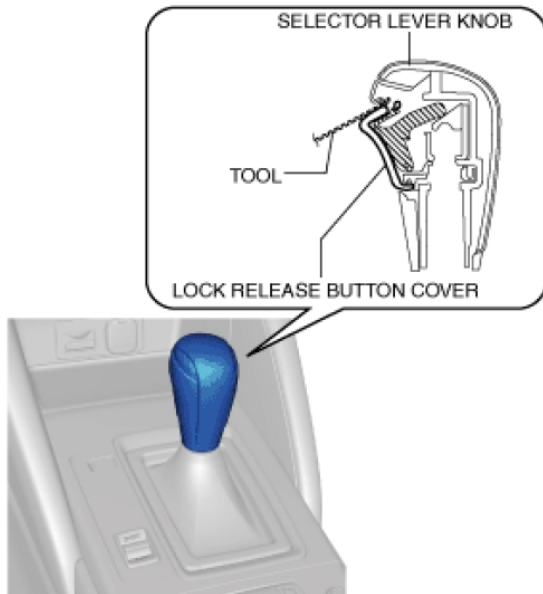
5. Insert the flathead screwdriver into the emergency override hole and push it down.
6. Verify that the selector lever can be shifted from the P position.



Removal:

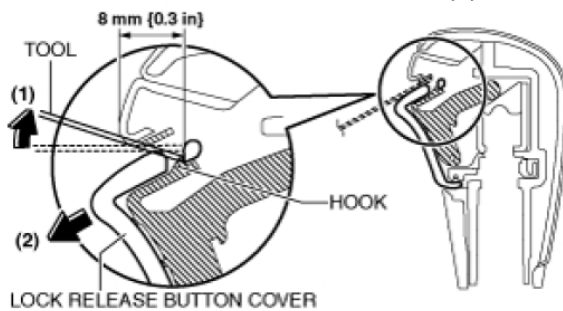
After moving the gear knob to D/Drive/fully backwards use a small tool e.g. a small flathead screwdriver (I used a phase tester) to remove the selector lever knob:

- (1) Insert the tool (width: 6 mm {0.2 in} or less, thickness: 1 mm {0.04 in} or less) as shown in the figure.



ac5uuw00003542

- (2) Move the tool in the direction of arrow (1) in the figure and detach the hook. Move the lock release button cover in the direction of arrow (2) in the figure and remove it.



This procedure looks like this:



Afterwards use the tool/screwdriver to remove the cap as shown here:



Pull the cap towards the front of the car to remove it. Then it looks like this:

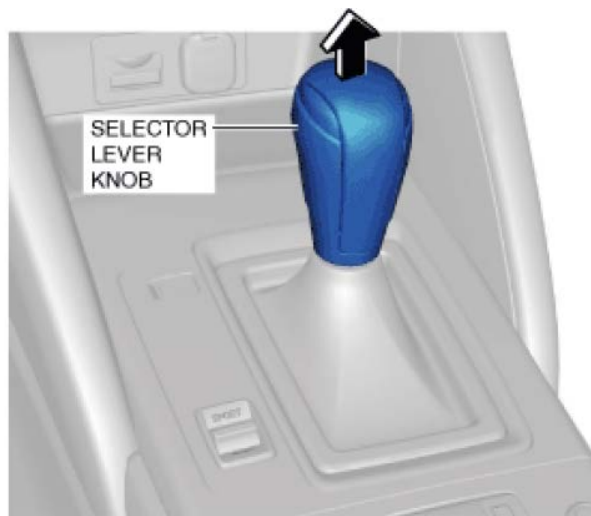


(To reassemble it afterwards, you have to use some force to press the cap back in place.)

Use the tool/screwdriver to remove the hidden spring. Search for space to stick the tool in or push the spring a little downwards/forwards to remove it. As alternative you can also use pointed pliers to remove the spring:



Afterwards pull the knob upwards to remove it:



That's it. Done. Now you can remove the shift panel.

Optional: I would recommend to remove the long white plastic pin as well by pulling it upwards. Just to be sure not to break it somehow.

Please mind, that this is not an official manual and everything you do is on your own risk.

Keywords: auto automatic trans transmission gear shift shifter knob removal remove

© 2018 by Tristan-cx5 @ mazda3revolution.com