

MAZDA3 2004

SECTION INDEX

A/C /HEATER/VENTILATION.....	3
A/C REFRIGERANT CAPACITIES	3
ABS/BRAKES	4
AIR BAG SYSTEM.....	4
AIR CLEANER.....	6
BACK WINDOW.....	14
CENTER CONSOLE.....	9
CLEAR COAT IDENTIFICATION	1
COOLING.....	3
COWL & DASH	8
ELECTRICAL.....	7
EMISSION SYSTEM.....	7
ENGINE UNDER COVER.....	6
ENGINE/TRANS.....	6
ENGINE/TRANS MOUNTS.....	6
EXHAUST	7
FRONT BUMPER	1
FRONT DOOR.....	11
FRONT DRIVE AXLE.....	5
FRONT FENDER.....	3
FRONT INNER STRUCTURE.....	3
FRONT LAMPS.....	2
FRONT SEAT	10
FRONT STEERING LINKAGE/GEAR.....	5
FRONT SUSPENSION	5
FUEL TANK.....	17
GRILLE	1
HOOD	2
INFORMATION LABELS.....	1
INSTRUMENT PANEL	8
LIFTGATE	16
LUGGAGE LID.....	15
PAINT CODE LOCATION.....	1
QUARTER GLASS.....	15
QUARTER PANEL	15
REAR BODY	17
REAR BUMPER.....	19
REAR DOOR	12
REAR LAMPS.....	19
REAR SEAT	11
REAR SUSPENSION.....	17
ROCKER/PILLARS/FLOOR.....	9
ROOF.....	14
SEAT BELTS	11
SPECIAL CAUTIONS.....	1
STEERING PUMP	5
STEERING WHEEL/COLUMN	5
SUNROOF	14
UNDERHOOD DIMENSIONS.....	3
WHEEL	4
WINDSHIELD.....	7

SPECIAL CAUTIONS

AIR BAG

Refer to Procedure Explanation 29 for Supplemental Restraint/Air Bag Special Cautions.

PAINT CODE LOCATION

Paint code located on left lock pillar.

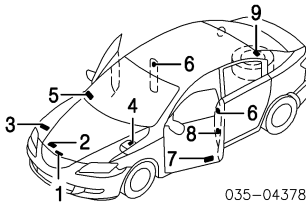
CLEAR COAT IDENTIFICATION

All colors are clear coat.

INFORMATION LABELS

Illustration Located in Next Column

1 Label, Cooling Fan	YF47-15-031
2 Label, A/C Caution	BN8P-61-439A
3 Label, Emission	
2.0L Eng	
w/Calif Emission	BN8B-69-036B
w/o Calif Emission	BN8P-69-036B
2.3L Eng	

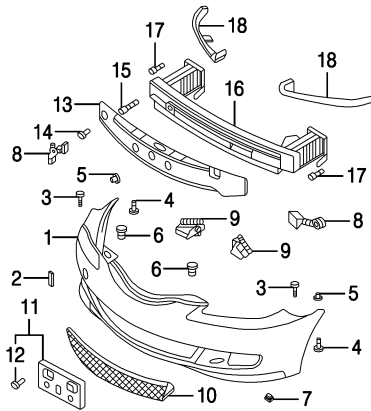


035-04378

w/Calif Emission	BN8K-69-036B
w/o Calif Emission	BN8L-69-036B
FA01-69-064B	
4 Label, Battery	
5 Label, Fuel Economy	
2.0L Eng	
Man Trans	BN8P-69-042A
Auto Trans	BN8S-69-042A
2.3L Eng	
Man Trans	BN8K-69-042A
Auto Trans	BN8M-69-042A
6 Label, Air Bag Caution	R/L FE01-57-K92
7 Label, Tire Info	
2.0L Eng	BN8P-69-014A
2.3L Eng	BN8K-69-014
8 Label, Safety Panel	FA11-69-C31B
9 Label, Temporary Tire	LD47-69-074
Label, Burglar Alarm	EC01-66-201
Label, Air Bag	BN8S-57-K93

FRONT BUMPER

HATCHBACK



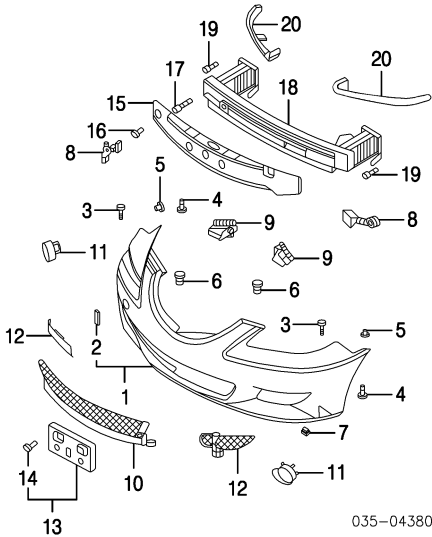
035-04379

1 Cover, Front (P)	BN8F-50-031D-AA
(P) Paint to Match	
2 Cover, Tow Hook	
Arctic White (Code A4D)	BN8F-50-A11-33
Black (Code 16W)	BN8F-50-A11-08
Canary Yellow (Code 25C)	BN8F-50-A11-34
Crystal Silver (Code 22V)	BN8F-50-A11-67
Passion Orange (Code 27Y)	BN8F-50-A11-07
Strato Blue (Code 25E)	BN8F-50-A11-38
Titanium Gray (Code 29Y)	BN8F-50-A11-01
Velocity Red (Code 27A)	BN8F-50-A11-87
Winning Blue (Code 27B)	BN8F-50-A11-94
3 Bolt, Upper	R/L 9YA5-90-602A
4 Bolt, Lower	R/L 9CF6-00-516B
5 Grommet, Side	R/L GJ6A-50-025
6 Fastener, Cover	R/L D350-50-E21
7 Nut, Clip (11)	B455-56-135
8 Retainer, Cover	R BP4K-50-0T1D
	L BP4K-50-0U1D
9 Plate, Bumper	R/L BN8F-50-2A1A
10 Grille, Front Cover	BN8F-50-1T1A
11 Holder Assy, License Plate	BN8F-50-170
12 Screw, Holder(1) (2)	9CD6-00-620
(1) Included w/License Plate Holder Assy	
13 Absorber, Impact	BN8P-50-111A
14 Fastener, Absorber	R/L FD01-68-AC3
15 Hook, Tow	BN8P-50-EJ0B
16 Bar, Reinforcement	BNYP-50-07Y
17 Bolt, Bar (4/Side)	R/L BPYK-50-022A
18 Bracket, Bumper	R BP4K-50-151B
	L BP4K-50-161A

SEDAN

Illustration Located in Next Column

1 Cover Assy, Front (P)	
Sport Type	BNYK-50-03XD
Std Type	BNYP-50-03XC
(P) Paint to Match	

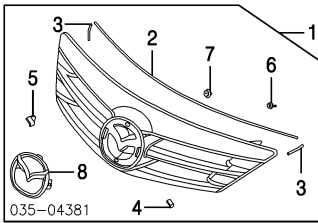


035-04380

2 Cover, Tow Hook(1)	
Arctic White (Code A4D)	BN8V-50-A11A-33
Black (Code 16W)	BN8V-50-A11A-08
Canary Yellow (Code 25C)	BN8V-50-A11A-34
Crystal Silver (Code 22V)	BN8V-50-A11A-67
New Light Blue (Code 28A)	BN8V-50-A11A-90
Nordic Green (Code 27C)	BN8V-50-A11A-97
Passion Orange (Code 27Y)	BN8V-50-A11A-07
Sparkling Silver (Code 24E)	BN8V-50-A11A-28
Strato Blue (Code 25E)	BN8V-50-A11A-38
Titanium Gray (Code 29Y)	BN8V-50-A11A-01
Velocity Red (Code 27A)	BN8V-50-A11A-87
Winning Blue (Code 27B)	BN8V-50-A11A-94
(1) Included w/Front Cover Assy	
3 Bolt, Upper	R/L 9YA5-90-602A
4 Bolt, Lower	R/L 9CF6-00-516B
5 Grommet, Side	R/L GJ6A-50-025
6 Clip, Cover	R/L BC1D-56-145
7 Nut, Clip (11)	B455-56-135
8 Retainer, Cover	R BN8V-50-0T1C
	L BN8V-50-0U1C
9 Plate, Bumper	R BN8P-50-2A1B
	L BN8P-50-2B1B
10 Grille, Front Cover	
Sport Type	BN9C-50-1T1A
Std Type	BN8V-50-1T1B
Cover, Lamp Hole	
11 Sport Type	R BN9C-50-C12A
	L BN9C-50-C22A
12 Std Type	R BN8V-50-C11
	L BN8V-50-C21
13 Holder Assy, License Plate	
Sport Type	BN8K-50-170
Std Type	BN8F-50-170
14 Screw, Holder(1) (2)	9CD6-00-620
(1) Included w/License Plate Holder Assy	
15 Absorber, Impact	BN8P-50-111A
16 Fastener, Absorber	R/L FD01-68-AC3
17 Hook, Tow	BN8P-50-EJ0B
18 Bar, Reinforcement	BNYP-50-07Y
19 Bolt, Bar (4/Side)	R/L BPYK-50-022A
20 Bracket, Bumper	R BN8V-50-151B
	L BN8V-50-161A

GRILLE

HATCHBACK



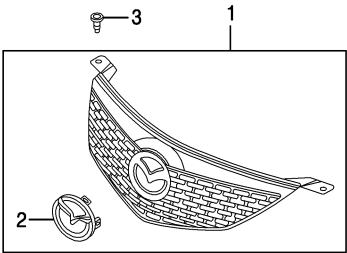
035-04381

1 Grille Assy	
Arctic White (Code A4D)	BP4S-50-710C-33
Black (Code 16W)	BP4S-50-710C-08
Canary Yellow (Code 25C)	BP4S-50-710C-34
Crystal Silver (Code 22V)	BP4S-50-710C-67
Passion Orange (Code 27Y)	BP4S-50-710C-07
Strato Blue (Code 25E)	BP4S-50-710C-38
Titanium Gray (Code 29Y)	BP4S-50-710C-01
Velocity Red (Code 27A)	BP4S-50-710C-87
Winning Blue (Code 27B)	BP4S-50-710C-94
2 Protector, Center(1)	BP4L-50-794A
3 Protector, Side(1)	R/L BP4N-50-794A
4 Protector, Lower(1)	R/L BP4S-50-794

MAZDA3 2004

GRILLE Cont'd	
HATCHBACK Cont'd	
5 Cap, Grille¶ (2/Side)	R BP4S-50-705 L BP4T-50-705
6 Bolt, Grille¶ No. 1 (4) No. 2	BP4K-50-7M5 BP4L-50-7M5
7 Clip, Grille¶ (2)	BP4M-51-SJ3
8 Emblem (Adhesive)¶	LD47-51-731
¶Included w/Grille Assy	

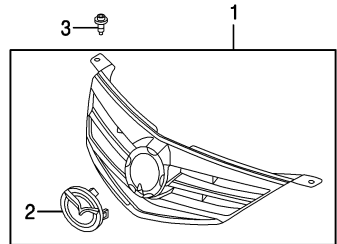
SEDAN SPORT TYPE	
---------------------	--



035-04382

1 Grille Assy	
Arctic White (Code A4D)	BN9G-50-710B-33
Black (Code 16W)	BN9G-50-710B-08
Canary Yellow (Code 25C)	BN9G-50-710B-34
Crystal Silver (Code 22V)	BN9G-50-710B-67
New Light Blue (Code 28A)	BN9G-50-710B-90
Nordic Green (Code 27C)	BN9G-50-710B-97
Passion Orange (Code 27Y)	BN9G-50-710B-07
Sparkling Silver (Code 24E)	BN9G-50-710B-28
Strato Blue (Code 25E)	BN9G-50-710B-38
Titanium Gray (Code 29Y)	BN9G-50-710B-01
Velocity Red (Code 27A)	BN9G-50-710B-87
Winning Blue (Code 27B)	BN9G-50-710B-94
2 Emblem (Adhesive)¶	LD47-51-731
¶Included w/Grille Assy	
3 Bolt, Grille	R/L 9YA5-90-602A

SEDAN STD TYPE	
-------------------	--



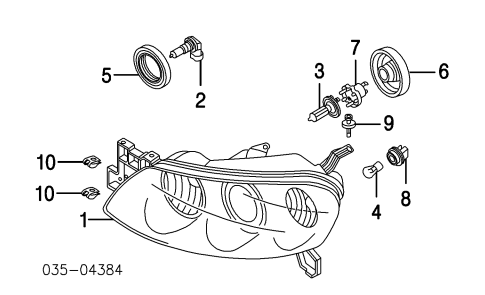
035-04383

1 Grille Assy	
w/Black Bar	BN8V-50-710B
w/o Black Bar	
Arctic White (Code A4D)	BN8W-50-710A-33
Black (Code 16W)	BN8W-50-710A-08
Canary Yellow (Code 25C)	BN8W-50-710A-34
Crystal Silver (Code 22V)	BN8W-50-710A-67
New Light Blue (Code 28A)	BN8W-50-710A-90
Nordic Green (Code 27C)	BN8W-50-710A-97
Passion Orange (Code 27Y)	BN8W-50-710A-07
Sparkling Silver (Code 24E)	BN8W-50-710A-28
Strato Blue (Code 25E)	BN8W-50-710A-38
Titanium Gray (Code 29Y)	BN8W-50-710A-01
Velocity Red (Code 27A)	BN8W-50-710A-87
Winning Blue (Code 27B)	BN8W-50-710A-94
2 Emblem (Adhesive)¶	LD47-51-731
¶Included w/Grille Assy	
3 Bolt, Grille	R/L 9YA5-90-602A

FRONT LAMPS	
COMBINATION LAMP HALOGEN	

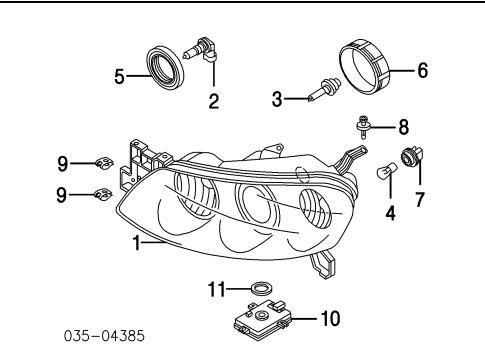
Illustration Located in Next Column

1 Lens & Body	
Hatchback	R BN8F-51-0K0D L BN8F-51-0L0D
Sedan	R BN8P-51-0K0B L BN8P-51-0L0B



2 Bulb, High Beam	R/L 9070-37-550
3 Bulb, Low Beam	R/L 9070-32-550
4 Bulb, Park/Signal	R/L 0000-11-1157-NA
5 Cover, High Beam Bulb	R/L T061-51-0A1
6 Cover, Low Beam Bulb	R/L BN4G-51-0A1
7 Holder, Bulb	R/L B28V-51-0A3
8 Socket, Park/Signal	R/L S09A-51-064
9 Rivet, Attaching	R/L B27K-51-PS7
10 Nut, Lamp (2/Side)	R/L 9YB3-10-603

COMBINATION LAMP HID	
-------------------------	--

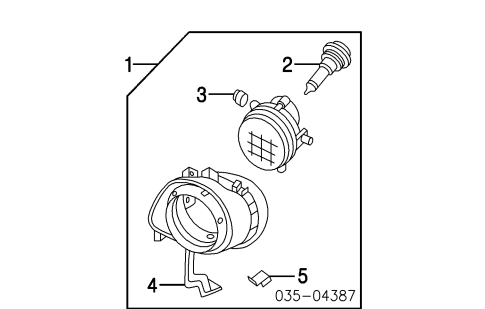


1 Lens & Body	
Hatchback	R BN8G-51-031C L BN8G-51-041C
Sedan	R BN8R-51-031A L BN8R-51-041A
2 Bulb, High Beam	R/L 9070-37-550
3 Bulb, Low Beam	R/L 9070-36-350
4 Bulb, Park/Signal	R/L 9970-13-210Y
5 Cover, High Beam Bulb	R/L T061-51-0A1
6 Cover, Low Beam Bulb	R/L BP4L-51-0A1
7 Socket, Park/Signal	R/L S09A-51-064
8 Rivet, Attaching	R/L B27K-51-PS7
9 Nut, Lamp (2/Side)	R/L 9YB3-10-603
10 Module, HID	R/L D391-51-0H3
11 Gasket, Module	R/L D391-51-0B2

SIDE REPEATER LAMP	
--------------------	--

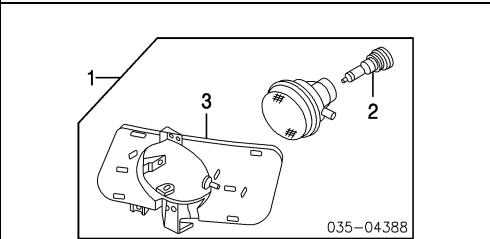
1 Lamp, Repeater	R/L GJ6A-51-120C
------------------	------------------

FOG LAMP HATCHBACK	
-----------------------	--



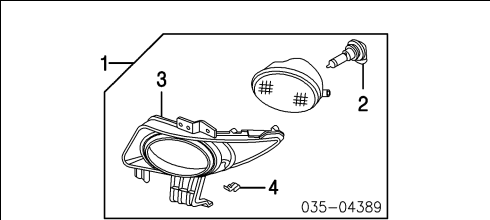
1 Lamp Assy, Fog	R BN8G-51-680B L BN8G-51-690B
2 Bulb, Fog¶	R 9070-37-550 L 9070-37-550
3 Stopper, Lamp¶	R BN8F-51-687 L BN8F-51-687
4 Bracket, Lamp¶	R BN8F-51-684A L BN8F-51-684A
5 Nut, Lamp¶	R/L GG2M-51-689
¶Included w/Fog Lamp Assy	

FOG LAMP SEDAN SPORT TYPE	
---------------------------------	--



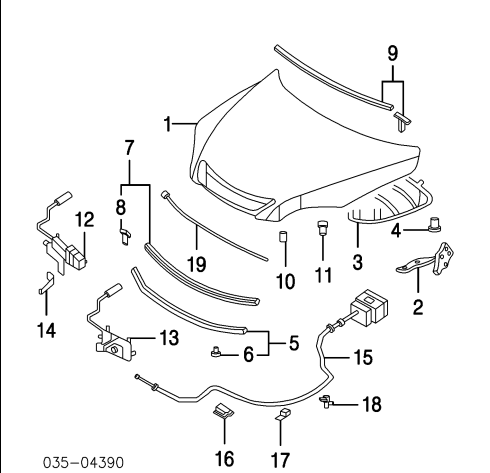
1 Lamp Assy, Fog	R BN8R-51-680A L BN8R-51-690A
2 Bulb, Fog¶	R 9070-37-550 L 9070-37-550
3 Bracket, Lamp¶	R BN9C-51-684 L BN9C-51-684
¶Included w/Fog Lamp Assy	

FOG LAMP SEDAN STD TYPE	
-------------------------------	--



1 Lamp Assy, Fog	R BN8P-51-680A L BN8P-51-690A
2 Bulb, Lamp	R/L 9070-37-550
3 Cover, Lamp¶	R BN8V-51-677A L BN8V-51-678A
4 Nut, Lamp¶	R/L FD01-50-803
¶Included w/Fog Lamp Assy	

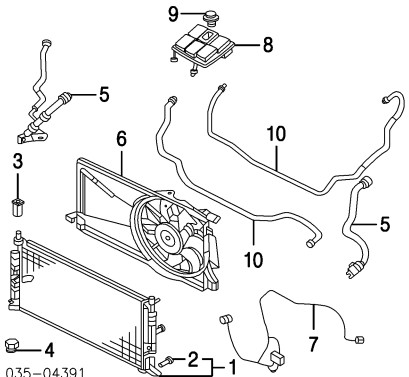
HOOD	
------	--



1 Panel, Hood	
Hatchback	BPYK-52-31X
Sedan	BNYV-52-31X
2 Hinge, Hood	R B32H-52-410A L B32H-52-420A
3 Insulator, Hood	
Hatchback	B32T-56-681A
Sedan	B33H-56-681B
4 Fastener, Insulator	
Hatchback (11)	GA2A-56-694
Sedan (13)	GA2A-56-694
5 Weatherstrip Assy, Hood	BN8V-56-770
6 Rivet, W/Strip¶ (11)	J001-56-741
¶Included w/Hood Weatherstrip Assy	
7 Seal Assy, Front Hood	BP4K-56-750
8 Fastener, Seal¶ (16)	BC1D-58-762
¶Included w/Front Hood Seal Assy	
9 Seal Assy, Rear-See Cowl & Dash Section	
10 Cushion, Front Hood	R/L BC1M-56-786
11 Cushion, Side Hood	R/L GJ6A-56-786A
12 Latch, Hood	
Hatchback	
w/Burglar Alarm System	BN8F-56-62X
w/o Burglar Alarm System	BP4K-56-62X
13 Sedan	

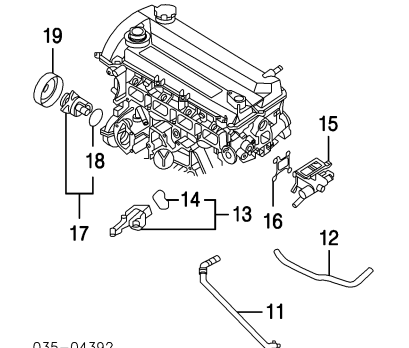
	w/Burglar Alarm System	BN8P-56-620
	w/o Burglar Alarm System	BN8V-56-620
14	Lever, Latch	BN8F-56-625
15	Cable, Latch Release	
	To 11-1-03	BP4K-56-720B
	From 11-1-03	BP4K-56-720C
16	Clip, Front Cable	GJ6A-56-731A
17	Clip, Center Cable	LA89-67-C41
18	Clip, Cable Rear	D001-56-731
19	Rod, Prop	
	Hatchback	BP4K-56-651A
	Sedan	BN8V-56-651A

COOLING



035-04391

1	Radiator Assy	Z602-15-200C
2	Cock, Drain	Z602-15-203
*Included w/Radiator Assy		
3	Bracket, Upper Rad	R/L Z601-15-240F
4	Mount, Lower Rad	
	w/ A/C	R/L Z603-15-202A
	w/o A/C	R/L Z601-15-202B
5	Hose, Radiator	
	Upper	LF50-15-186F
	Lower	LF50-15-185D
6	Shroud & Fan	Z602-15-025B
7	Harness, Fan	Z601-66-991
8	Tank, Coolant	LF50-15-350
9	Cap, Tank	LF50-15-205A
10	Hose, Coolant Tank	
	R	Z601-15-383E
	L	LF50-15-381B



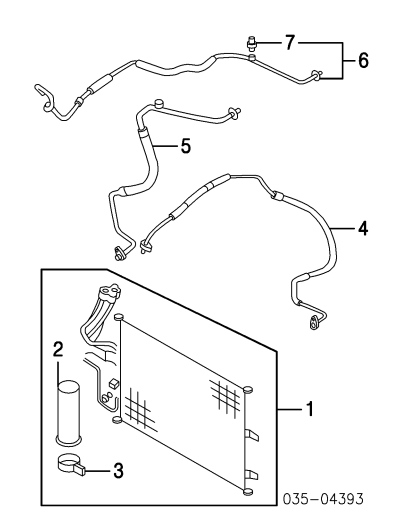
035-04392

Hose, By-Pass		
11	No. 1	L309-15-260
12	No. 2	LF70-15-260E
13	Thermostat Assy	
	To 2-1-04	LF50-15-170
	From 2-1-04	LF50-15-170A
14	Gasket, Cover	LF02-15-165
*Included w/Thermostat Assy		
15	Outlet, Water	L327-15-17Z
16	Gasket, Outlet	LF01-15-169
17	Pump Assy, Water	LF01-15-100
18	Gasket, Water Pump	LF01-15-116
*Included w/Water Pump Assy		
19	Pulley, Water Pump	LF50-15-131
Belt, Drive		
	2.0L Eng	
	Man Trans	LF51-15-909
	Auto Trans	LF50-15-909A
	2.3L Eng	
	Man Trans	L373-15-909
	Auto Trans	L372-15-909A

A/C REFRIGERANT CAPACITIES

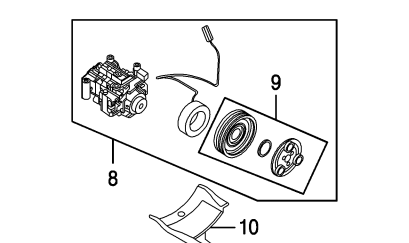
A/C R-134a Refrigerant Capacity
2004: 18.6 Ozs (1.16 Lbs)

A/C /HEATER/VENTILATION



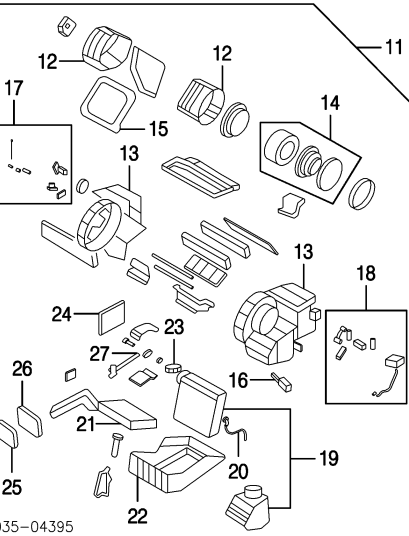
035-04393

1	Condenser Assy	BPYK-61-48Z
2	Receiver/Drier	BP4K-61-501
3	Bracket, Receiver	BP4K-61-502
*Included w/Condenser Assy		
4	Hose, High Pressure	BP4S-61-4G0B
5	Hose, Low Pressure	BP4S-61-462C
6	Pipe Assy, Condenser	BP4K-61-46X
7	Switch, Pressure	B01A-61-503
*Included w/Condenser Pipe Assy		



035-04394

8	Compressor Assy	BP4S-61-K00
9	Pulley Kit	BP4S-61-L20
*Included w/Compressor Assy		
10	Bracket, Compressor	BP4S-61-458B

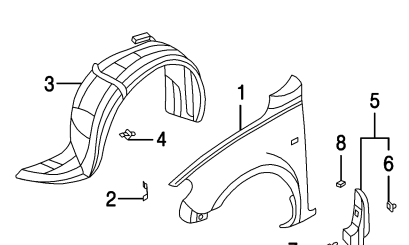


035-04395

11	Evaporator/Heater Assy	
	w/ A/C	BNYR-61-42Y
	w/o A/C	BN8P-61-130F
12	Case, Heater Upper	R/L BP4K-61-B01-2
13	Case, Heater Lower	
	w/ A/C	
	w/o A/C	
		R BP4K-61-A02A
		L BN8P-61-A01A
		R BP4L-61-A02A
		L BN8P-61-A01A
14	Motor & Fan Unit	BP4K-61-B10
15	Lining, Blower	BP4K-61-B04
16	Resistor, Blower	BP4K-61-B15

17	Link Set, Temp	BP4K-61-A20
18	Link Set, Mode	BP4K-61-A30
19	Evaporator	BPYK-61-J1Z
20	Sensor, Valve	BP4K-61-J22
21	Core, Heater	BP4K-61-A10
22	Case, Evaporator	BP4K-61-A03
23	Valve, Expansion	BP4K-61-J14
	Seal, Cooling Unit	
24	Upper	BP4K-61-J31
25	Lower Outer	
	w/ A/C	BP4K-61-J06
	w/o A/C	BP4L-61-J06
26	Lower Inner	BP4K-61-J12
27	Pipe, Evaporator	BP4K-61-J15
	*Included w/Evaporator/Heater Assy	

FRONT FENDER



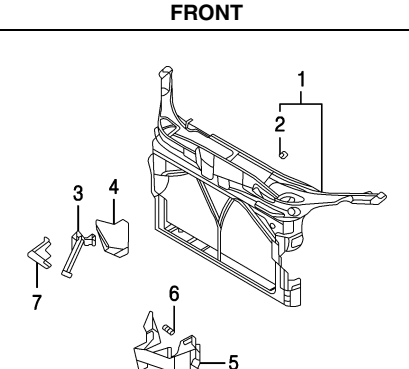
035-04396

1	Fender	
	Hatchback	R BP4K-52-111C
		L BP4K-52-211C
	Sedan	R BN8V-52-111C
		L BN8V-52-211C
2	Bracket, Fender	R BP4K-53-290
		L BP4K-54-290
3	Liner, Fender	
	Sport Type	R BP4L-56-130D
		L BP4L-56-140D
	Std Type	R BP4K-56-130E
		L BP4K-56-140E
4	Fastener, Liner	NA01-56-145
	w/Mudguard (23)	NA01-56-145
5	Mudguard Assy	R BP4K-51-840A
		L BP4K-51-850A
6	Clip, Mudguard	R/L BP4K-51-SJ3
*Included w/Mudguard Assy		
7	Grommet, Clip	R/L GJ6E-51-832A
8	Rivet, Mudguard (2/Side)	R/L B092-51-833
Lamp, Repeater-See Front Lamps Section		

UNDERHOOD DIMENSIONS

Information not available at time of publication.

FRONT INNER STRUCTURE



035-04397

1	Support Assy, Radiator	BP4K-53-110F
2	Nut, Support Mounting (6)	FB01-50-133C
*Included w/Radiator Support Assy		
3	Support, Hood Lock	BP4K-52-15YA
4	Plate, Seal	R BP4K-56-251
5	Guide, Air	L BP4K-56-L21
6	Fastener, Air Guide	L GD7A-50-EA1
7	Cover, Hole	BP4K-56-078A

SIDE

Illustration Located in Next Column

1	Apron & Sidemember Assy	R BPY0-53-20X
		L BPY0-54-20X
2	Apron Assy	R BP4K-53-210L
		L BP4K-54-210J

FRONT INNER STRUCTURE Cont'd

FRONT INNER STRUCTURE Cont'd

SIDE Cont'd



- ¶Included w/Apron & Sidemember Assy
(a) Included w/Rear Sidemember Assy

ELECTRICAL COMPONENTS



- ## 1 Harness Assy, Engine Wiring

- ### ¶Order by Application

AIR BAG SYSTEM

FRONT



- BP4K-57-K30B
BN8P-57-K00
BP4K-66-CS0
BP4K-57-K50C
BP4K-57-K1XA

SIDE



- ¶Included w/Seat Back Assy-listed in Front Seat Section

ABS/BRAKES

Illustration Located in Next Column

- ||Included w/ABS Actuator Assy



- | | |
|---------------------------------------|--------------|
| Cylinder Assy, Brake Master | BPYS-43-40Z |
| Reservoir | BPYL-43-55Z |
| Mounting (4) | D350-43-954 |
| Included w/Brake Master Cylinder Assy | |
| o. Tank | BN8F-43-55YA |

WHEEL

STEEL WHEEL

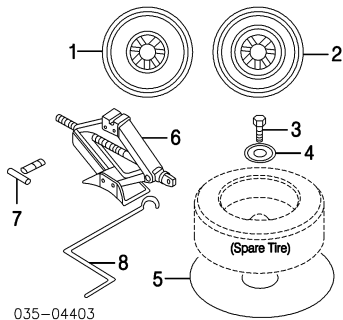


- 9965-L4-6050
9965-40-6560
BP4K-37-170B
BN8B-37-170A
9963-60-4130
0603-26-161A
FE01-37-140A

ALLOY WHEEL

- | | |
|----------------|--------------|
| Steel, Alloy | |
| 6x6 | 9965-L8-6050 |
| 6x6-1/2" | |
| Front | 9965-41-6560 |
| Rear | 9965-42-6560 |
| 7x6-1/2" | |
| Front | 9965-02-6570 |
| Rear | 9965-03-6570 |
| Problem, Wheel | J/G63-37-192 |
| Arm, Valve | 9963-60-4130 |
| Act, Lug | B002-37-160A |
| Sensor, Wheel | FE01-37-140A |

SPARE WHEEL & HARDWARE

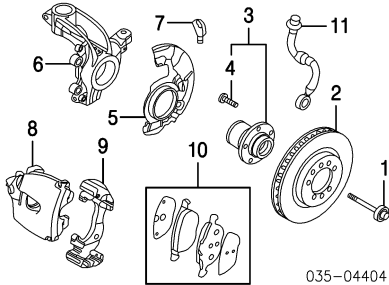


035-04403

Wheel, Spare

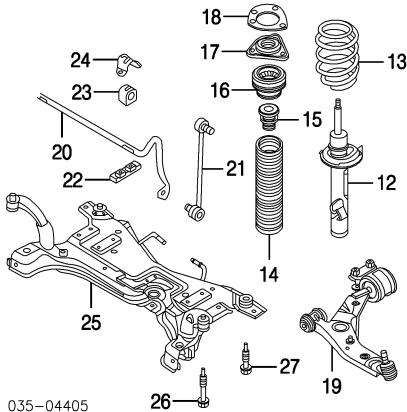
- | | | |
|---|------------------------|--------------|
| 1 | 2.0L Eng | 9965-35-4050 |
| 2 | 2.3L Eng | 9965-23-4060 |
| 3 | Bolt, Spare Wheel | 8532-56-961 |
| 4 | Clamp, Spare Wheel | GA5R-56-971C |
| 5 | Insulator, Spare Wheel | B01C-68-8L1 |
| 6 | Jack | GA5R-37-790B |
| 7 | Bolt, Jack | B001-56-170C |
| 8 | Handle, Jack | GJ21-37-810A |

FRONT SUSPENSION



035-04404

- | | | |
|----|--|------------------|
| 1 | Bolt, Axle | R/L 9YA0-21-083D |
| 2 | Rotor, Brake | |
| | 2.0L Eng | R/L BP4Y-33-25XB |
| | 2.3L Eng | R/L BP6Y-33-25XD |
| 3 | Hub Assy | |
| | w/ABS | R/L BP4K-33-15XB |
| | w/o ABS | R/L BN8B-33-15XB |
| 4 | Bolt, Hub [¶] (5/Side) | R/L BP4K-33-062 |
| | [¶] Included w/Hub Assy | |
| 5 | Shield, Splash | R/L N.A. |
| 6 | Knuckle, Steering | |
| | w/ABS | R/L BP4K-33-021C |
| | w/o ABS | R/L BN8B-33-021B |
| 7 | Sensor, Front ABS-See ABS/Brakes Section | |
| 8 | Caliper, Brake | |
| | R | BPYK-33-61XA |
| | L | BPYK-33-71XA |
| 9 | Support, Caliper | |
| | 2.0L Eng | R/L BPYK-33-28X |
| | 2.3L Eng | R/L BPYS-33-28XA |
| 10 | Pad Set, Brake | R/L B3YH-33-23Z |
| 11 | Hose, Brake | R/L BP4K-43-980D |

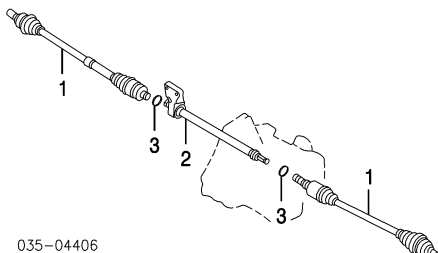


035-04405

- | | | |
|----|--------------|----------------|
| 12 | Strut | |
| | 2.0L Eng | R BP4K-34-700E |
| | | L BP4K-34-900E |
| | 2.3L Eng | R B32T-34-700D |
| | | L B32T-34-900D |
| 13 | Spring, Coil | |
| | 2.0L Eng | |

- | | | |
|------------|-------------------------|------------------|
| Man Trans | R/L BP4N-34-011B | |
| Auto Trans | R/L B32T-34-011B | |
| 2.3L Eng | | |
| Man Trans | R/L B32T-34-011B | |
| Auto Trans | R/L BN8H-34-011B | |
| 14 | Boot, Dust | R/L BP4K-34-0A5B |
| 15 | Bumper, Rebound | R/L BP4K-34-111A |
| 16 | Bushing, Mounting | R/L BP4K-34-38XA |
| 17 | Support, Mount | R/L BP4K-34-380B |
| 18 | Stiffener, Mount | R BP4K-34-007B |
| | L BP4K-34-008B | |
| 19 | Arm, Lower Control | R B32H-34-300 |
| | L B32H-34-350 | |
| 20 | Bar, Stabilizer | |
| | Hatchback | BP4L-34-151A |
| | Sedan | |
| | 15" Wheels | BP4K-34-151D |
| | 16" Wheels, 17" Wheels | BP4L-34-151A |
| 21 | Link, Stabilizer | BP4K-34-170C |
| 22 | Bracket, Stabilizer | R/L BP4K-34-810A |
| 23 | Bushing, Bar | R/L BP4K-34-156A |
| 24 | Bracket, Bushing | R/L BP4K-28-155B |
| 25 | Crossmember, Susp | BP4K-34-800F |
| 26 | Bolt, Front Crossmember | R/L 9YA0-11-201B |
| 27 | Bolt, Rear Crossmember | R/L 9YA0-21-601A |

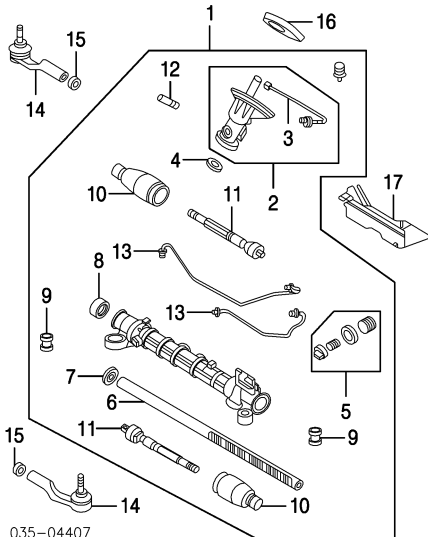
FRONT DRIVE AXLE



035-04406

- | | | |
|---|--------------|-----------------|
| 1 | Shaft, Axle | |
| | Hatchback | |
| | w/ABS | R GR27-25-50XB |
| | | L GR27-25-60XB |
| | w/o ABS | R GG27-25-500C |
| | | L GG27-25-600C |
| | Sedan | |
| | w/ABS | R GR27-25-50XB |
| | | L GR27-25-60XB |
| | w/o ABS | R GG27-25-500C |
| | | L GG27-25-600C |
| 2 | Shaft, Joint | GG27-25-700B |
| 3 | Clip, Shaft | R/L G054-25-421 |

FRONT STEERING LINKAGE/GEAR

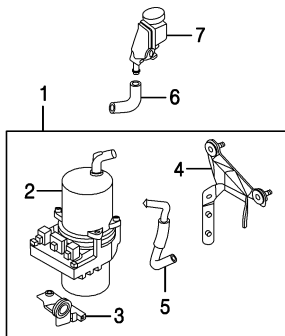


035-04407

- | | | |
|----|------------------------------------|-----------------|
| 1 | Gear Assy, Steering | BP4L-32-110 |
| 2 | Valve Assy, Steering [¶] | BP4L-32-380 |
| 3 | Sensor [¶] (a) | BP4L-32-J20 |
| | (a) Included w/Steering Valve Assy | |
| 4 | Seal, Dust [¶] | BP4L-32-NA1 |
| 5 | Yoke Set [¶] | BP4L-32-11X |
| 6 | Rack, Steering Gear [¶] | BP4L-32-119 |
| 7 | Seal, Rack [¶] | BP4L-32-180 |
| 8 | Cover, Housing [¶] | BP4L-32-202 |
| 9 | Bushing, Mount [¶] | R/L BP4L-32-123 |
| 10 | Boot, Rack [¶] | R/L BP4L-32-12X |
| 11 | Rod, Inner Tie [¶] | R/L BP4L-32-240 |
| 12 | Pipe, Pressure [¶] | BP4L-32-460 |
| 13 | Pipe, Return [¶] | R BP4L-32-FD0 |

- | | | |
|----|--|-----------------|
| | | L BP6L-32-FD0 |
| | [¶] Included w/Steering Gear Assy | |
| 14 | End, Tie Rod | R BP4L-32-280 |
| | | L BP4L-32-290 |
| 15 | Nut, Lock | R/L BP4L-32-131 |
| 16 | Cover, Valve | BP4L-32-112 |
| 17 | Insulator, Gear | BP4L-32-229C |

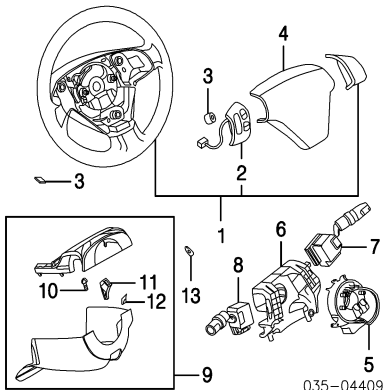
STEERING PUMP



035-04408

- | | | |
|---|--|--------------|
| 1 | Pump Assy, Steering | BP4L-32-650E |
| 2 | Pump, Steering [¶] | BP4L-32-600 |
| 3 | Bracket, Front Pump [¶] | BP4L-32-603A |
| 4 | Bracket, Rear Pump [¶] | B32H-32-603 |
| 5 | Hose, Return [¶] | BP4L-32-682B |
| | [¶] Included w/Steering Pump Assy | |
| 6 | Hose, Suction | BP4L-32-688A |
| 7 | Reservoir, Fluid | BP4L-32-690A |
| 8 | Pipe, Steering | BP4L-32-47YC |

STEERING WHEEL/COLUMN



035-04409

- | | | |
|---|---|-----------------|
| 1 | Wheel Assy, Steering | |
| | Leather | BN8D-32-980A |
| | Urethane | |
| | w/Switch | |
| | w/Cruise Control | BN8B-32-980A |
| | w/o Cruise Control | BP4L-32-980B |
| | w/o Switch | BP4K-32-980B |
| 2 | Switch, Steering [¶] | |
| | w/Cruise Control | BN8P-66-4M0 |
| | w/o Cruise Control | BP4K-66-4M0A |
| | [¶] Included w/Steering Wheel Assy | |
| 3 | Cap, Wheel | R/L BC1D-32-9L1 |
| 4 | Module, Driver Air Bag-See Air Bag System Section | |
| 5 | Clockspring-See Air Bag System Section | |
| 6 | Body, Combination Switch | BP4K-66-1B1 |
| 7 | Switch, Wiper | |
| | Hatchback | |
| | w/Adjustable Wheel | BP4N-66-128 |
| | w/o Adjustable Wheel | BP4K-66-128 |
| | Sedan | |
| | w/Adjustable Wheel | BN8W-66-128 |
| | w/o Adjustable Wheel | BN8V-66-128 |
| 8 | Switch, Dimmer/Signal | |
| | Hatchback | |
| | w/Auto H/Lamps | BP8M-66-122 |
| | w/o Auto H/Lamps | BN8R-66-122 |
| | Sedan | |
| | w/Auto H/Lamps | BP8M-66-122 |
| | w/Fog Lamps | BP8L-66-122 |
| | w/o Fog Lamps | |

MAZDA3 2004

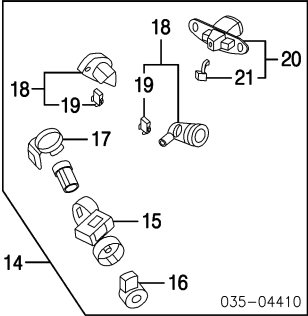
STEERING WHEEL/COLUMN Cont'd

WHEEL & TRIM Cont'd

w/o Auto H/Lamps
w/Fog Lamps
w/o Fog Lamps

9 Cover Assy, Column
10 Screw, Tapping(1) (2)
11 Case, Lamp(1)
12 Lens(1)
13 Bulb

BN8R-66-122
BP8L-66-122
BP4K-60-21XE
G030-60-248
BP4K-60-245
BP4K-60-246
B456-60-223



035-04410

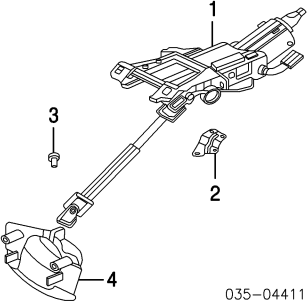
14 Lock Set, Complete
Hatchback
Man Trans
Auto Trans
Sedan
Man Trans
w/Burglar Alarm System
w/o Burglar Alarm System
w/Keyless Entry
w/o Keyless Entry
Auto Trans
w/Burglar Alarm System
w/o Burglar Alarm System
w/Keyless Entry
w/o Keyless Entry

BN8G-09-010B
BN8J-09-010B
BN8R-09-010C
BP8M-09-010C
BN8L-09-010D
BN8T-09-010C
BP8P-09-010D
BN8N-09-010D

15 Lock, Steering(1)
Man Trans
Auto Trans
16 Switch, Ignition(1)
17 Immobilizer(1)
18 Cylinder Assy, Door Lock(1)-See Front Door Section
19 Clip, Door Lock(1) (a)-See Front Door Section
20 Cylinder Assy, Lid Lock(1)-See Luggage Lid Section
21 Clip, Lid Lock(1) (a)-See Luggage Lid Section

BP4K-66-150
N.A.
BP4K-66-151
BP4K-66-938
See Front Door Section
(a) Included w/Door Lock Cylinder Assy
See Luggage Lid Section
(a) Included w/Complete Lock Set
(a) Included w/Lid Lock Cylinder Assy

COLUMN TILT



035-04411

1 Column, Steering
Man Trans
To 10-8-03
From 10-8-03
Auto Trans
2 Bracket, Harness
3 Bolt, Shaft
4 Cover, Joint

BP4K-32-10XE
BP4K-32-10XF
BN8D-32-10XD
BP4K-67-B31A
B455-32-099A
BP4K-32-AZ1A

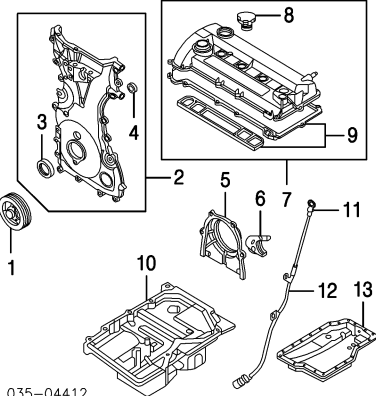
ENGINE/TRANS

2.0L ENG

Illustration Located in Next Column

1 Pulley, Crankshaft
w/Calif Emission
w/o Calif Emission

LF26-11-400A
LF50-11-400A

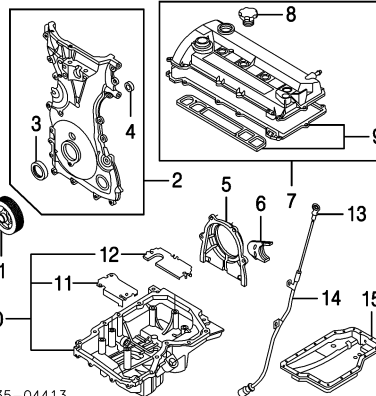


035-04412

2 Cover Assy, Timing
3 Seal, Oil(1)
4 Seal, Rubber(1) (2)
5 Cover, Rear
6 Cover, End Plate
7 Cover Assy, Valve
8 Cap, Oil Filler(1)
9 Gasket, Cover(1)
10 Pan, Engine Oil
11 Dipstick, Engine Oil
12 Tube, Eng Dipstick
13 Pan, Trans Oil

L807-10-500C
LF01-10-602
9XG0-64-34X9
LF01-11-310
LF17-10-903
LF64-10-210D
LF04-10-250
LF02-10-230
LF50-10-400B
LF50-50-400C
LF13-10-450A
LF13-10-440A
FN11-21-51X

2.3L ENG



035-04413

1 Pulley, Crankshaft
Man Trans
Auto Trans
2 Cover Assy, Timing
3 Seal, Oil(1)
4 Seal, Rubber(1)
5 Cover, Rear
6 Cover, End Plate
7 Cover Assy, Valve
8 Cap, Oil Filler(1)
9 Gasket, Cover(1)
10 Pan Assy, Engine Oil
11 Baffle, Front(1)
12 Plate, Rear(1)
13 Dipstick, Eng Oil
14 Tube, Eng Dipstick
15 Pan, Trans Oil

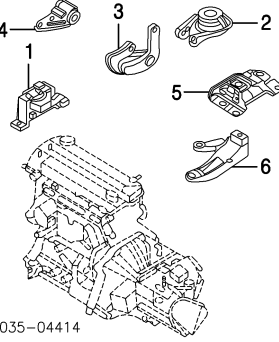
LF13-11-400
LF50-11-400A
L322-10-500A
LF01-10-602
L309-10-533A
LF01-11-310
LF17-10-903
L374-10-210D
LF04-10-250
LF02-10-230
L372-10-400C
L372-10-406
L309-10-402
L309-10-450A
L309-10-440
FN11-21-51X

ENGINE/TRANS MOUNTS

Illustration Located in Next Column

1 Mount, Eng Front
2.0L Eng
2.3L Eng
2 Mount, Eng Side
Bracket, Eng Side Mount
3 Man Trans
4 Auto Trans
To 1-1-04

BP4S-39-060C
B32T-39-060A
BP4S-39-040
BP4S-39-010A
BP4N-39-010A

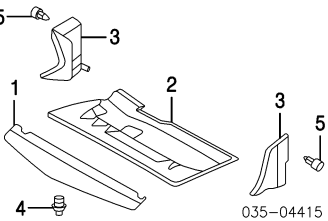


035-04414

From 1-1-04
5 Mount, Trans
6 Bracket, Trans Mount
Man Trans
Auto Trans

BP4N-39-010B
BP4N-39-070C
BP4S-39-080A
B32T-39-080A

ENGINE UNDER COVER

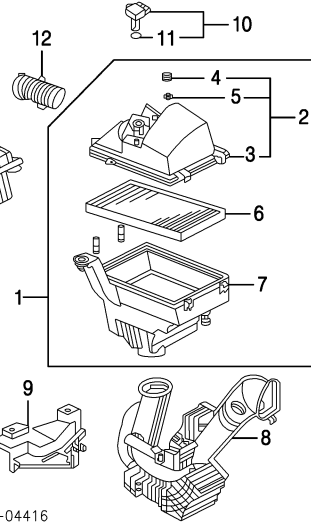


035-04415

1 Cover, Front Under
2 Cover, Rear Under
3 Cover, Side Rear
4 Fastener, Under Cover (3)
5 Fastener, Side Cover

BP4K-56-112
BP4K-56-111G
R BP4K-56-114D
L BP4K-56-115E
GD7A-50-EA1
R/L NA01-56-145

AIR CLEANER



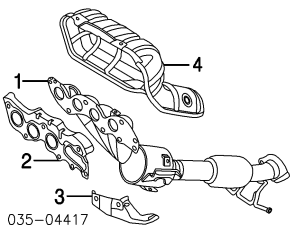
035-04416

1 Cleaner Assy, Air
w/Calif Emission
w/o Calif Emission
2 Cover Assy, Upper(1)
w/Calif Emission
w/o Calif Emission
3 Cover, Upper(1) (a)
w/Calif Emission
w/o Calif Emission
4 Collar(1) (a)
5 Nut, Clip(1) (a)
6 Element, Cleaner(1)
7 Case, Lower(1)
8 Duct, Fresh Air
9 Baffle, Air Intake
10 Meter Assy, Air Flow
11 O-Ring, Meter(1)
12 Hose, Air

LF67-13-320A
LF50-13-320B
LF67-13-Z1X
LF50-13-Z1X
LF67-13-Z01A
LF50-13-Z01B
LF50-13-Z11
FB01-50-133C
LF50-13-240A
LF50-13-Z02B
LF50-13-201B
LF50-13-204B
ZL01-13-215R-00
ZL01-13-214
LF67-13-221

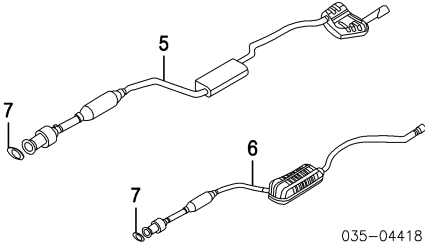
13 Chamber, Resonator LF50-13-195A

EXHAUST



035-04417

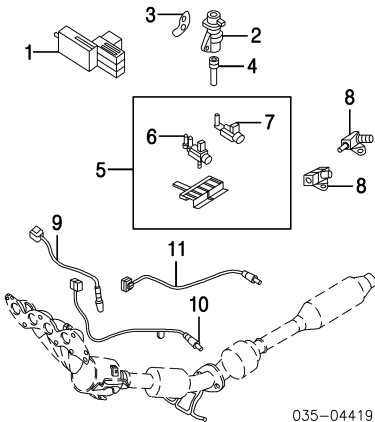
- 1 **Manifold/Converter**
2.0L Eng
w/Calif Emission LF14-20-50XC
To 9-29-03 LF14-20-50XC
From 9-29-03 LF13-20-50XF
w/o Calif Emission L328-20-50XD
2.3L Eng L327-13-460A
LF07-40-071B
- 2 **Gasket, Manifold**
- 3 **Bracket, Manifold**
- 4 **Shield, Manifold**
w/Calif Emission LF67-13-390C
To 9-29-03 LF67-13-390D
From 9-29-03 LF50-13-390B
w/o Calif Emission



035-04418

- 5 **Pipe, Exhaust**
w/Calif Emission LF14-20-55XD
To 10-21-03 LF14-20-55XE
From 10-21-03 to 11-5-03 LF14-20-55XF
From 11-5-03
- 6 **w/o Calif Emission**
Man Trans L352-20-55XA
Hatchback L351-20-55XA
Sedan LF13-20-55XD
Auto Trans
2.0L Eng
2.3L Eng L327-20-55XD
Hatchback L326-20-55XD
Sedan
- 7 **Gasket, Pipe**
To 11-1-03 LF07-40-305
From 11-1-03 LF07-40-305A
- Sensor, Oxygen Exh Manifold-See Emission System Section**
Sensor, Front Oxygen-See Emission System Section
Sensor, Rear Oxygen-See Emission System Section

EMISSION SYSTEM



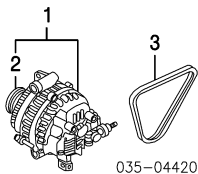
035-04419

- 1 **Canister, Vapor**
w/Calif Emission LF67-13-970B
w/o Calif Emission LF66-13-970B
- 2 **Valve, EGR** LF01-20-300
- 3 **Gasket, EGR Valve** LF01-20-305
- 4 **Pipe, EGR Valve** LF01-20-310
- 5 **Valve Assy, Solenoid**
2.0L Eng LF82-18-740
2.3L Eng LF15-18-741
- 6 **Valve, Front Solenoid**

- 7 **Valve, Rear Solenoid** LF82-18-741
*Included w/Solenoid Valve Assy
- 8 **Valve, Solenoid (2)**
2.3L Eng L301-18-741
- 9 **Sensor, Oxygen Exh Manifold**
w/Calif Emission LF63-18-8G1B
w/o Calif Emission LF66-18-861B
- 10 **Sensor, Front Oxygen**
2.0L Eng LF67-18-861A
w/Calif Emission LF68-18-861B
w/o Calif Emission L3A1-18-861A
2.3L Eng
- 11 **Sensor, Rear Oxygen**
To 10-29-03 LF69-18-861B
From 10-29-03 LF69-18-861C

ELECTRICAL

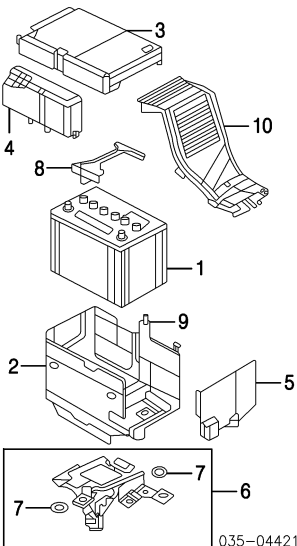
ALTERNATOR



035-04420

- 1 **Alternator Assy** LF50-18-300A
- 2 **Pulley, Alternator** LF50-18-W11
- *Included w/Alternator Assy
- 3 **Belt, Drive-See Cooling Section**

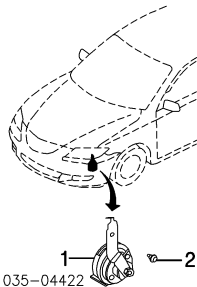
BATTERY



035-04421

- 1 **Battery** N.A.
- 2 **Cable, Battery** N.A.
- 3 **Box, Battery** BP4K-56-040G
- 4 **Cover, Box Upper** Z601-18-593D
- 5 **Cover, Box Front Upper** LF50-18-593D
- 6 **Cover, Box End** Z601-18-591B
- 7 **Tray Assy, Battery** BP4S-56-03YD
- 8 **Rubber, Mounting (2)** LF50-13-363A
- *Included w/Battery Tray Assy
- 9 **Clamp, Battery** BP4K-56-031B
- 10 **Bracket, Clamp** BP4K-56-043
- 11 **Duct, Battery** Z601-18-59YC

HORN

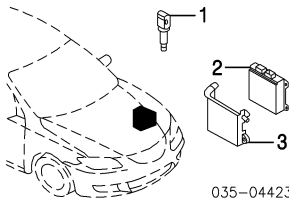


035-04422

- 1 **Horn** BNP6-66-78Y

2 Screw, Mounting GJ6A-67-5D7

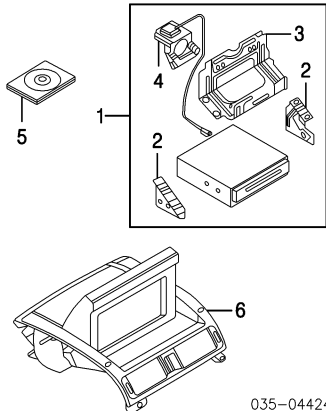
IGNITION



035-04423

- 1 **Coil, Ignition (4)**
To 10-1-03 LF16-18-100
From 10-1-03 LF16-18-100B
- 2 **Module, Powertrain Control**
2.0L Eng LFYJ-18-881
Man Trans LFYK-18-881
Auto Trans
2.3L Eng L3Z3-18-881
Man Trans L3Z2-18-881B
Auto Trans
- *Order by Application
- 3 **Bracket, Module** LF50-18-786D

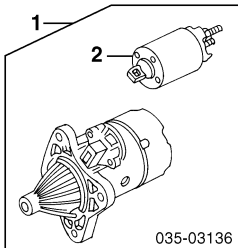
NAVIGATION SYSTEM



035-04424

- Navigation Unit-See Instrument Panel Section**
Bracket, Navigation-See Instrument Panel Section
- 1 **Control Assy, Navigation** BN8R-66-DF0A
- 2 **Bracket, Navigation**
- 3 **Side** R BP4K-66-9B2
L BP4K-66-9B3
- 4 **Center** BP4K-66-9B1
- 5 **Antenna, GPS** BP4K-66-DY0
- *Included w/Navigation Control Assy
- 6 **CD, Navigation** BN8R-66-DZ0
- 7 **Display, Navigation** BN8R-66-EV0

STARTER



035-03136

- 1 **Starter Assy**
2.0L Eng L813-18-400
2.3L Eng L327-18-400
- 2 **Switch, Magnetic** L327-18-X10
- *Included w/Starter Assy

WINDSHIELD

Illustration Located in Next Column

- 1 **Glass Assy, Windshield**
Mazda BN8R-63-900C
w/Rain Sensor BN8P-63-900B
w/o Rain Sensor

MAZDA3 2004

WINDSHIELD Cont'd

035-04425

2 Moulding, Reveal

BP4P-50-601A

3 Pin, Glass (2)

BP4K-63-938

Included w/Windshield Glass Assy

4 Sensor, Rain

BP4K-66-5G0

5 Trim Assy, Pillar

w/Side Curtain Air Bag

Corn Beige

R BP4K-68-160D-30

L BP4K-68-170D-30

R BP4K-68-160D-77

L BP4K-68-170D-77

Gray

R BP4L-68-160E-30

L BP4L-68-170E-30

R BP4L-68-160E-77

L BP4L-68-170E-77

w/o Side Curtain Air Bag

Corn Beige

R BP4L-68-160E-30

L BP4L-68-170E-30

R BP4L-68-160E-77

L BP4L-68-170E-77

Gray

R LB82-64-345

R/L GJ6A-68-162

R/L GJ6A-68-155A

Included w/Pillar Trim Assy

9 Mirror, Rear View

w/GDO

BP4L-69-220A

w/o GDO

BP4K-69-220

10 Cover, Mirror Base

R BP4L-69-1C1B

L BP4L-69-1C7C

11 Visor, Sun

w/Sunroof

R BP8R-69-270C-77

L BP8R-69-320C-77

R BP8P-69-270C-77

L BP8P-69-320C-77

w/o Sunroof

R BP8P-69-270C-77

L BP8P-69-320C-77

Gray listed, Order by Application

12 Adapter, Sun Visor

Beige

R/L LC62-69-261A-80

Corn Beige

R/L LC62-69-261A-30

Gray

R/L LC62-69-261A-77

WIPER SYSTEM

035-04426

1 Blade Assy, Wiper

R B32L-67-330

L B32H-67-330

R B32H-67-333

L B32L-67-333

R B32L-67-332

L B32H-67-332

Included w/Wiper Blade Assy

4 Arm, Wiper

R BN8F-67-321B

L BN8G-67-321A

R/L BP4K-67-395

R/L 9090-10-801

5 Cover, Wiper Arm

R/L 9090-10-801

6 Nut, Wiper Arm

R/L BP4K-67-37XB

7 Motor & Linkage Assy

8 Motor, Wiper

BP4K-67-340

Included w/Motor & Linkage Assy

9 Tank Assy, Washer

Small

Hatchback

BP4N-67-480C

Sedan

BN8V-67-480C

10 Tank, Washer

Hatchback

BP4N-67-481B

Sedan

BN8V-67-481B

11 Cap, Tank

BP4K-67-483

12 Pump, Front Washer

G22C-67-482

13 Pump, Rear Washer

BP4K-67-482

14 Grommet, Washer Tank

Hatchback (2)

G22C-67-491

Sedan

G22C-67-491

Included w/Washer Tank Assy

15 Tank Assy, Washer

Large

Hatchback

BN8F-67-480B

Sedan

BN8P-67-480B

16 Tank, Washer

Hatchback

BN8F-67-481A

Sedan

BN8P-67-481A

17 Cap, Tank

BP4K-67-483

18 Pump, Front Washer

G22C-67-482

19 Pump, Rear Washer

BP4K-67-482

20 Grommet, Washer Tank

Hatchback (2)

G22C-67-491

Sedan

G22C-67-491

21 Tube, Tank

BP6W-67-501A

22 Joint, Tube

DB05-67-502

23 Switch, Level

BP4K-67-488

Included w/Washer Tank Assy

24 Nozzle, Washer

Hatchback

R BP4L-67-510

L BP4K-67-510

Sedan

R BN8W-67-510

L BN8V-67-510

COWL & DASH

035-04427

1 Grille Assy, Right Cowl

Hatchback

BP4K-50-7R0C

Sedan

BN8V-50-7R0C

2 Moulding, Fender

Hatchback

R BP4K-51-PB1A

Sedan

R BN8V-51-PB1A

Gasket, Grille

3 No. 1

BP4K-50-795

4 No. 2

BP4L-50-795

5 No. 3

BP4M-50-795

6 No. 4

BP4N-50-795

Included w/Right Cowl Grille Assy

7 Grille Assy, Left Cowl

Hatchback

BP4K-50-7S0C

Sedan

BN8V-50-7S0C

8 Moulding, Fender

Hatchback

L BP4K-51-PC1A

Sedan

L BN8V-51-PC1A

Gasket, Grille

9 No. 1

BP4K-50-795

10 No. 2

BP4L-50-795

11 No. 3

BP4M-50-795

12 No. 4

BP4N-50-795

Included w/Left Cowl Grille Assy

13 Cap, Cowl Top

R/L BP4M-50-705

14 Grille, Center Cowl

BP4K-50-7P1A

15 Clip, Grille (3)

BC1D-56-145

16 Panel, Cowl Grille

BP4K-53-520B

Seal Assy, Rear

Hatchback

BP4K-56-760

Sedan

BN8V-56-760

Fastener, Seal (16)

BC1D-58-762

Included w/Rear Seal Assy

17 Panel Assy, Upper Dash

BP4K-53-500G

18 Bracket, Cowl

BP4K-54-54XA

19 Bracket, Wiper

No. 1

R BP4K-53-5DXB

L BP4K-54-5DXB

20 No. 2

BP4K-54-5EXA

21 No. 3

BP4K-54-5FXA

Included w/Upper Dash Panel Assy

22 Crossmember, Cowl

BP4K-56-H10A

23 Hose, Drain

BP4K-56-0D1A

24 Panel Assy, Lower Dash

BPY0-53-4A0A

035-04428

25 Reinf, Dash Panel

BP4K-54-42X

26 Bracket, Lower Dash

BP4K-54-440

Included w/Lower Dash Panel Assy

27 Crossmember, Lower

BP4K-53-450B

28 Insulator, Front Dash

To 11-20-03

BP4K-56-17XD

From 11-20-03

BP4K-56-17XE

INSTRUMENT PANEL

035-04429

1 Panel Assy, Instrument

BN8P-60-42XL

2 Tape, Seal

No. 1

R/L BP4K-55-165

No. 2

BP4K-55-162A

4 Nut, Spring (2)

Included w/Instrument Panel Assy

5 Bracket, Instrument

R BP4K-60-412A

L BP4K-60-413A

6 Seal, Upper

R/L BP4K-55-164

7 Plate Assy, Decoration

2.0L Eng

BP4K-55-150C

2.3L Eng

BP4M-55-150D

8 Spring, Decoration

BP4K-55-257

9 Spring, Plate

No. 1

S47P-64-345

No. 2

J001-64-345

Included w/Decoration Plate Assy

10 Duct, Outer

R BP4K-64-741

L BP4K-64-841

11 Gasket, Duct

R/L BP4K-55-163A

12 Grille, Ventilation

R/L BP4K-64-730B

13 Grille, Demister

R BP4K-60-160C

L BP4K-60-170C

14 Pad, Instrument Panel

R BP4K-60-35XE

L BP4K-60-360D

15 Panel Assy, Center Vent

B32H-55-31XE

16 Grille, Center Vent

R B32H-64-930D

L B32J-64-930D

17 Spring, Center Panel (5)

S47P-64-345

Included w/Center Vent Panel Assy

18 Panel, Frame Center

Black

BP4K-60-401C-02

Corn Beige

BP4K-60-401C-30

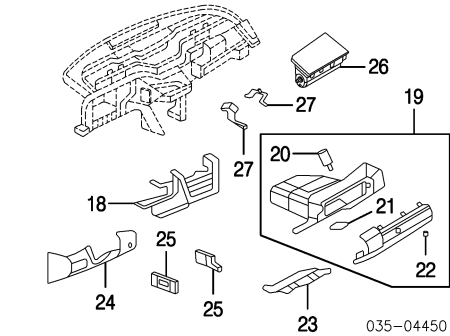
8

Labor Times Shown are for Replacement with New OEM Undamaged Parts on New Undamaged Vehicles.
Comments or suggestions? Need assistance? Call 1-800-854-7030 or 858-578-6550. Ext. 8220. Fax 1-888-256-7969 or 858-549-0629.

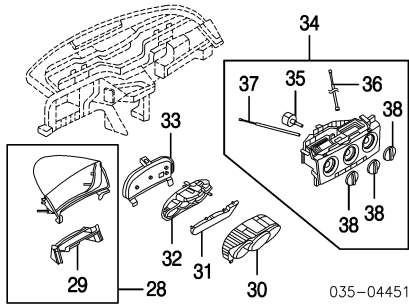
madp1_g01_

Page 8—April 22, 2004—13:28:16—Version

Manufacturer



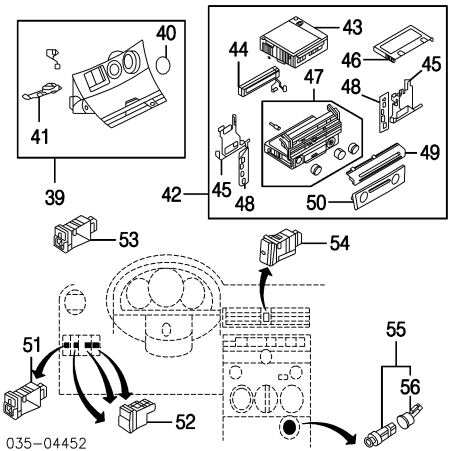
- 19 **Box Assy, Glove**†
w/Navigation System BN8R-64-030G-02
w/o Navigation System BN8P-64-030G-02
†Black listed, Order by Application
- 20 **Damper, Glove Box (a)** BN8P-64-08X
21 **Cover, Lock (a)** BP4K-64-115A
- 22 **Cylinder, Glove Box (a)**
Black GE4T-64-09YB-00
Corn Beige GE4T-64-09YB-30
(a) Included w/Glove Box Assy
- 23 **Cover, Under** R BP4K-64-520E
24 **Panel, Lower**
Black L BN8P-64-280B-02
Corn Beige L BN8P-64-280B-30
R BP4K-60-4A1B
25 **Bracket, Inst Panel** L BP4K-60-4B1A
- 26 **Module, Passenger Air Bag-See Air Bag System Section**
27 **Bracket, Air Bag Module** R BP4K-60-A30A
L BP4K-60-A21A



- 28 **Hood Assy, Meter** BP4K-55-420D
29 **Cover, Front**† BP4K-55-182C
†Included w/Meter Hood Assy
- 30 **Panel, Meter**
2.0L Eng BP4K-55-214
2.3L Eng BP4L-55-214
31 **Lens, Meter** BP4K-55-447
- 32 **Plate, Window**
2.0L Eng BP4K-55-446
2.3L Eng BP4L-55-446
- 33 **Speedometer**
2.0L Eng
Man Trans
w/Calif Emission BN8B-55-471
w/o Calif Emission BN8R-55-471
Auto Trans
w/Calif Emission BN8D-55-471A
w/o Calif Emission BN8T-55-471A
2.3L Eng
Man Trans BN8F-55-471
Auto Trans BN8H-55-471A
- 34 **Control Assy, Heater**
2.0L Eng
w/ A/C BN8R-61-190B
w/o A/C BN8P-61-190B
2.3L Eng
w/ A/C BN8L-61-190B
w/o A/C BN8K-61-190B
- 35 **Switch, Fan**† BP4K-61-C50
36 **Wire, Temp Control**† BP4K-61-C25
37 **Wire, Mode Control**† BP4K-61-C35
38 **Knob, Control**† (3) BP4K-61-191
†Included w/Heater Control Assy

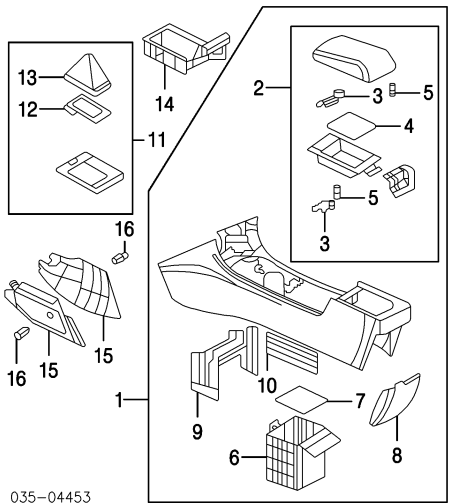
Illustration Located in Next Column

- 39 **Panel Assy, Center** BP4M-55-210E
40 **Cover, Hole**† BP4M-55-574A
41 **Lamp, Ashtray**† BP4K-64-61YA
†Included w/Center Panel Assy
- 42 **Radio Assy**
w/CD Player BN8F-66-9R0A
w/o CD Player BN8S-66-9RAX
43 **Player, CD**† GK1R-66-AG0
44 **Navigation Unit**† BP4K-66-EV0



- 45 **Bracket, Navigation**† R BP4K-66-9B2
L BP4K-66-9B3
- 46 **Bracket, Radio**†
w/o CD Player F151-66-9B1
47 **Tuner, Radio**† BN8P-66-AS0
48 **Felt, Garnish**† R/L BP4K-66-EG5
49 **Cover, Upper**† B32L-66-BG4
50 **Cover, Lower**†
w/CD Player BP4K-66-BG4
w/o CD Player B32P-66-BG4
†Included w/Radio Assy
- 51 **Switch, Headlamp** BP4K-66-6F0
52 **Cover, Switch Hole (3)** BP4K-55-225
53 **Resistor Unit** BP4K-66-6R0
54 **Switch, Hazard** BP4K-66-4H0
55 **Lighter Assy, Cigarette** F151-66-250
56 **Ring, Illumination**† F151-66-251
†Included w/Cigarette Lighter Assy

CENTER CONSOLE

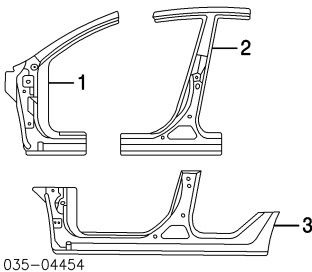


- 1 **Console Assy, Center**
Black BN8P-64-420E-02
Corn Beige BN8P-64-420E-30
- 2 **Lid Assy, Console**† BP4K-64-450A-02
Black BP4K-64-450A-30
Corn Beige
- 3 **Lock, Lid**† (a) (2)
Black GJ6A-64-45Y-02
Corn Beige GJ6A-64-45Y-30
4 **Mat, Console**† (a) BP4L-64-449
5 **Cushion, Lid**† (a) (2) B092-64-046
(a) Included w/Console Lid Assy
- 6 **Box, Console**† BP4K-64-441B
7 **Mat, Console Box**† BP4K-64-449A
- 8 **Panel, Rear Console**†
Black B32H-64-470-02
Beige B32H-64-470-30
- 9 **Bracket, Rear Console**† BP4K-64-428A
10 **Plate, Console**† BP4K-64-433
†Included w/Center Console Assy
- 11 **Plate Assy, Upper**
Man Trans BP4L-64-340B
w/Navigation System BP4K-64-340B
w/o Navigation System
Auto Trans
w/Navigation System BP4P-64-340A
w/o Navigation System BP4N-64-340
- 12 **Plate, Boot**†

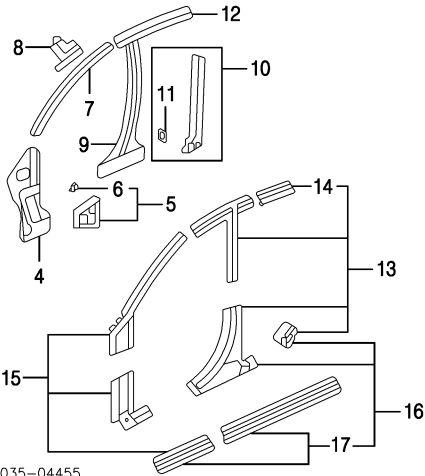
- Man Trans BP4K-64-334A
Auto Trans BP4N-64-332
13 **Boot, Change Lever**† BP4K-64-331A
†Included w/Upper Plate Assy
- 14 **Boot, Shifter** BP4K-64-43YC
- 15 **Panel, Finish**
Black R BP4K-64-231B-02
L BP4K-64-241B-02
Corn Beige R BP4K-64-231B-30
L BP4K-64-241B-30
- 16 **Fastener, Panel**
Black R/L GJ21-68-885B-02
Corn Beige R/L GJ21-68-885B-36

ROCKER/PILLARS/FLOOR

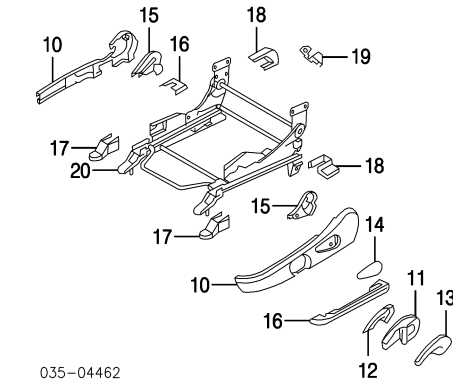
SHEET METAL



- 1 **Pillar, Outer Hinge**
Hatchback R BPYL-70-221
L BPYL-71-221
Sedan
w/Spoiler R BNYA-70-221
L BNYA-71-221
w/o Spoiler R BNYV-70-221
L BNYV-71-221
- 2 **Pillar, Outer Center**
Hatchback R BPYL-70-351
L BPYL-71-351
Sedan
w/Spoiler R BNYA-70-351
L BNYA-71-351
w/o Spoiler R BNYV-70-351
L BNYV-71-351
- 3 **Panel, Outer Rocker**
Hatchback R BNYF-70-271
L BNYF-71-271
Sedan
w/Side Spoiler R BNYC-70-271
L BNYC-71-271
w/o Side Spoiler R BNYB-70-271
L BNYB-71-271



- 4 **Panel, Cowl Side** R BP4K-70-230C
L BP4K-71-230D
- 5 **Reinforcement Assy, Cowl Side**
Hatchback R BP4K-70-65Z
L BP4K-71-65Z
Sedan R BN8V-70-65Z
L BN8V-71-65Z
- 6 **Bracket, Fender**†
Hatchback-Not Serviced R/L BN8V-70-21Y
Sedan †Included w/Cowl Side Reinforcement Assy
- 7 **Pillar, Inner Front** R BPYK-70-240
L BPYK-71-240
- 8 **Reinf, Front Pillar** R BP4K-70-244A
L BP4K-71-244A
- 9 **Pillar, Inner Center** R BPYK-70-080
L BPYK-71-080
- 10 **Reinforcement Assy, Center Pillar** R BP4K-70-360A
L BP4K-71-360A



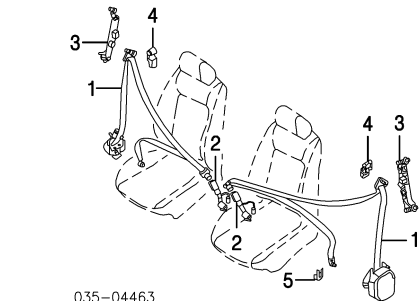
035-04462

- 10 Cover, Seat Cushion¶
- R B33D-88-1H1-02
L B33D-88-1H3-02
- ¶Black listed, Order by Application
- GJ6A-88-15Y
- 11 Lever, Seat
- 12 Cover, Lever
- Black BP4K-88-4E5-02
Corn Beige BP4K-88-4E5-30
Gray BP4K-88-4E5-73
- 13 Lever, Lifter
- Black BP4K-88-857-02
Corn Beige BP4K-88-857-30
Gray BP4K-88-857-73
- 14 Knob, Knuckle
- Black B33D-88-1H5-02
Corn Beige B33D-88-1H5-30
Gray B33D-88-1H5-73
- 15 Cover, Recliner¶
- R BP4K-88-1F4-02
L BP4K-88-1F7-02
- 16 Cover, Seat Lower¶
- R B33D-88-1K8-02
L B33D-88-1K7-02
- 17 Cover, Adjuster Front¶
- R B33D-57-043A-02
L BP4K-57-041C-02
- 18 Cover, Adjuster Rear¶
- R B33D-57-053A-02
L B33D-57-054A-02
- ¶Black listed, Order by Application
- 19 Protector, Rear R/L BP4K-88-091
- 20 Adjuster, Seat Track
- STA BN8P-88-H50
STX BN8P-88-A50

REAR SEAT

SEAT BELTS

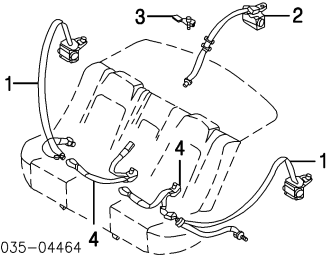
FRONT



035-04463

- 1 Belt, Front Seat
- Black R BN8P-57-630C-02
L BN8P-57-690-02
Corn Beige R BN8P-57-630C-30
L BN8P-57-690-30
- 2 Buckle, Seat Belt
- Black R B32H-57-L20-02
L BP4K-57-L80-02
Corn Beige R B32H-57-L20-30
L BP4K-57-L80-30
- 3 Adjuster, Shoulder Belt
- Corn Beige R/L BP4K-57-960B-30
Gray R/L BP4K-57-960B-77
- 4 Cover, Belt Anchor
- Upper R/L BP4K-57-631A-30
Corn Beige R/L BP4K-57-631A-77
Gray
- 5 Lower
- Black R/L BP4L-57-631A-02
Corn Beige R/L BP4L-57-631A-30

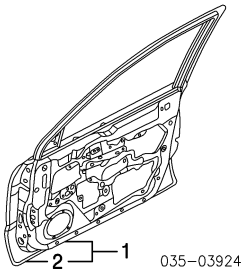
REAR



035-04464

- 1 Belt & Retractor, Outer
- Hatchback R BP4K-57-730C-02
L BP4K-57-790C-02
- Sedan
- Black R BN8V-57-730B-02
L BN8V-57-790B-02
- Beige R BN8V-57-730B-30
L BN8V-57-790B-30
- 2 Belt & Retractor, Center
- Hatchback BN8F-57-740C-02
- Sedan
- Black BN8P-57-740D-02
BN8P-57-740D-30
Beige GJ6A-57-77ZA
- 3 Anchor, Seat Belt
- 4 Buckle, Seat Belt
- Black R BP4K-57-720A-02
L BP4K-57-780A-02
R BP4K-57-720A-30
L BP4K-57-780A-30
- Beige

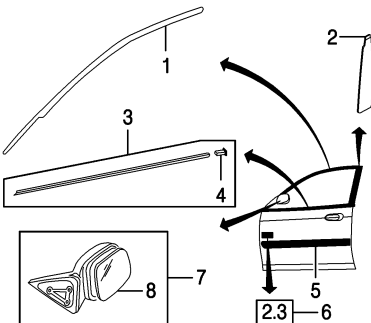
FRONT DOOR
SHEET METAL



035-03924

- 1 Shell Assy, Door
- Hatchback R BPYK-58-02X
L BPYK-59-02X
- Sedan R BNYV-58-02X
L BNYV-59-02X
- 2 Panel, Outer Repair¶
- Hatchback R BP4K-58-031B
L BP4K-59-031B
- Sedan R BN8V-58-031A
L BN8V-59-031A
- ¶Included w/Door Shell Assy

EXTERIOR TRIM



035-04465

- 1 Moulding, Door Sash Upper
- R BP4K-50-8V1A
L BP4K-50-8W1A
- 2 Moulding, Door Sash Rear
- R BP4K-50-8V3A
L BP4K-50-8W3A
- 3 Moulding Assy, Outer Belt
- R BP4K-50-640D
L BP4K-50-650D
- 4 Protector, Moulding¶
- R BP4K-50-645C
L BP4K-50-655C
- ¶Included w/Outer Belt Moulding Assy
- 5 Moulding, Side (Adhesive)
- Arctic White (Code A4D) R BP4K-50-681-33

- Black (Code 16W)
- Canary Yellow (Code 25C)
- Crystal Silver (Code 22V)
- New Light Blue (Code 28A)
- Nordic Green (Code 27C)
- Passion Orange (Code 27Y)
- Sparkling Silver (Code 24E)
- Strato Blue (Code 25E)
- Titanium Gray (Code 29Y)
- Velocity Red (Code 27A)
- Winning Blue (Code 27B)
- Paint to Match

- 6 Nameplate (Adhesive)
- "2.3"
- 7 Mirror Assy, Rear View

- Heated
- Manual R BN8T-69-120E
L BN8T-69-180E
- Power
- Arctic White (Code A4D) R BP8M-69-120E-33
L BP8M-69-180E-33
- Black (Code 16W) R BP8M-69-120E-08
L BP8M-69-180E-08
- Canary Yellow (Code 25C) R BP8M-69-120E-34
L BP8M-69-180E-34
- Crystal Silver (Code 22V) R BP8M-69-120E-67
L BP8M-69-180E-67
- New Light Blue (Code 28A) R BP8M-69-120E-90
L BP8M-69-180E-90
- Nordic Green (Code 27C) R BP8M-69-120E-97
L BN8T-69-180E-97
- Passion Orange (Code 27Y) R BP8M-69-120E-07
L BP8M-69-180E-07
- Sparkling Silver (Code 24E) R BP8M-69-120E-28
L BP8M-69-180E-28
- Strato Blue (Code 25E) R BP8M-69-120G-38
L BP8M-69-180G-38
- Titanium Gray (Code 29Y) R BP8M-69-120E-01
L BP8M-69-180E-01
- Velocity Red (Code 27A) R BP8M-69-120E-87
L BP8M-69-180E-87
- Winning Blue (Code 27B) R BP8M-69-120E-94
L BP8M-69-180E-94
- Non-Heated
- Manual R BN8P-69-120E
L BN8P-69-180E
- Power
- Arctic White (Code A4D) R BN8B-69-120G-33
L BN8B-69-180G-33
- Black (Code 16W) R BN8B-69-120G-08
L BN8B-69-180H-08
- Canary Yellow (Code 25C) R BN8B-69-120G-34
L BN8B-69-180G-34
- Crystal Silver (Code 22V) R BN8B-69-120G-67
L BN8B-69-180G-67
- New Light Blue (Code 28A) R BN8B-69-120G-90
L BN8B-69-180G-90
- Nordic Green (Code 27C) R BN8B-69-120G-97
L BN8B-69-180G-97
- Passion Orange (Code 27Y) R BN8B-69-120H-07
L BN8B-69-180G-07
- Sparkling Silver (Code 24E) R BN8B-69-120H-28
L BN8B-69-180G-28
- Strato Blue (Code 25E) R BN8B-69-120G-38
L BN8B-69-180H-38
- Titanium Gray (Code 29Y) R BN8B-69-120G-01
L BN8B-69-180H-01
- Velocity Red (Code 27A) R BN8B-69-120G-87
L BN8B-69-180G-87
- Winning Blue (Code 27B) R BN8B-69-120G-94
L BN8B-69-180G-94

- 8 Glass, Mirror¶
- Manual R BN8R-69-1G1
L BN8R-69-1G7
- Power
- Heated R BP8M-69-1G1
L BP8M-69-1G7
- Non-Heated R BN8B-69-1G1
L BN8B-69-1G7
- ¶Included w/Rear View Mirror Assy

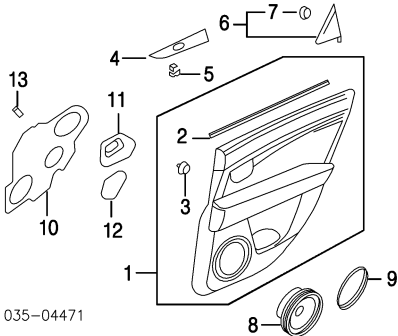
INTERIOR TRIM

Illustration Located in Next Column

- 1 Panel Assy, Trim
- 2.0L Eng
- Man Windows
- Black R BN8C-68-42YK-02
L BN8C-68-45YK-02
- Corn Beige R BN8C-68-42YK-30
L BN8C-68-45YK-30
- Pwr Windows
- Black R BN8B-68-42YK-02

4 Hatchback	R BP4K-50-8V6A L BP4K-50-8W6A
5 Sedan	R BN8V-50-8V6 L BN8V-50-8W6
6 Garnish Assy, Rear Corner Hatchback	R BP4K-50-M30C L BP4K-50-M40C
7 Clip, Garnish¶	R/L G043-50-742
8 Gasket, Garnish¶	R/L T001-50-M37
¶Included w/Rear Corner Garnish Assy	
9 Moulding Assy, Outer Belt Hatchback	R BP4K-50-660E L BP4K-50-670E
Sedan	R BN8V-50-660C L BN8V-50-670C
10 Protector, Front Mldg¶	R BP4K-50-664B L BP4K-50-674B
11 Protector, Rear Mldg¶	R BN8V-50-665 L BN8V-50-675
¶Included w/Outer Belt Moulding Assy	
12 Moulding, Side (Adhesive)	
Arctic White (Code A4D)	R BP4K-50-682-33 L BP4K-50-692-33
Black (Code 16W)	R BP4K-50-682-08 L BP4K-50-692-08
Canary Yellow (Code 25C)	R BP4K-50-682-34 L BP4K-50-692-34
Crystal Silver (Code 22V)	R BP4K-50-682-67 L BP4K-50-692-67
New Light Blue (Code 28A)	R BP4K-50-682-90 L BP4K-50-692-90
Nordic Green (Code 27C)	R BP4K-50-682-97 L BP4K-50-692-97
Passion Orange (Code 27Y)	R BP4K-50-682-07 L BP4K-50-692-07
Sparkling Silver (Code 24E)	R BP4K-50-682-28 L BP4K-50-692-28
Strato Blue (Code 25E)	R BP4K-50-682-38 L BP4K-50-692-38
Titanium Gray (Code 29Y)	R BP4K-50-682-01 L BP4K-50-692-01
Velocity Red (Code 27A)	R BP4K-50-682-87 L BP4K-50-692-87
Winning Blue (Code 27B)	R BP4K-50-682-94 L BP4K-50-692-94
Paint to Match	R BPOK-50-682 L BPOK-50-692

INTERIOR TRIM

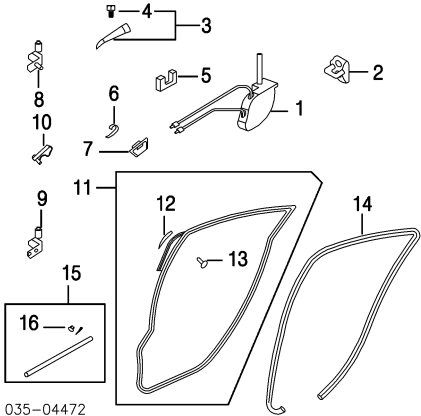


035-04471

1 Panel Assy, Trim Hatchback	
Cloth	R BN8F-68-52YH-02 L BN8F-68-55YH-02
Leather	R BN8G-68-52YJ-02 L BN8G-68-55YJ-02
Sedan	
Man Windows	
Black	R BN8B-68-52YJ-02 L BN8B-68-55YJ-02
Corn Beige	R BN8B-68-52YJ-30 L BN8B-68-55YJ-30
Pwr Windows	
2.0L Eng	
Black	R BN8C-68-52YJ-02 L BN8C-68-55YJ-02
Corn Beige	R BN8C-68-52YJ-30 L BN8C-68-55YJ-30
2.3L Eng	
Cloth	R BN8F-68-52YH-02 L BN8F-68-55YH-02
Leather	R BN8G-68-52YJ-02 L BN8G-68-55YJ-02
2 Moulding, Inner Belt¶	R BP4K-72-821 L BP4K-72-821
3 Clip, Trim Panel¶ (a)	
No. 1	R/L GJ6R-68-ABX
No. 2	R/L GJ6A-68-AB1
¶Included w/Trim Panel Assy (a) As Required	
4 Panel, Switch	
Black	R B32H-68-5L1A-02 L B32H-68-5L6A-02
Corn Beige	R B32H-68-5L1A-30 L B32H-68-5L6A-30
5 Switch, Pwr Window	R/L B32H-68-370
6 Garnish Assy, Door Corner	R BP4K-68-51XB L BP4K-68-51YB
7 Clip, Garnish¶ (2/Side)	R/L E120-68-AB1

¶Included w/Door Corner Garnish Assy	
8 Speaker, Radio	R/L GJ6A-66-960
9 Bracket, Speaker	R/L N055-66-9B0
10 Shield, Moisture	
Man Windows	R BP4L-72-97XD L BP4L-73-97XD
Pwr Windows	R BP4K-72-97XD L BP4K-73-97XD
Cover, Door Hole	
11 Upper	R BN8F-72-973B L BN8F-73-973B
12 Lower	R BP4L-72-973 L BP4L-73-973
13 Pad, Door	R/L GJ6E-58-863A

HARDWARE

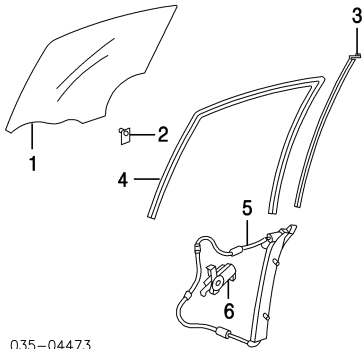


035-04472

1 Latch, Door Manual	R BN8B-72-310B L BN8B-73-310B
Power	R BP4K-72-310B L BP4K-73-310B
2 Striker, Latch	R/L B25D-58-361A
3 Handle Assy, Outer	
Arctic White (Code A4D)	R GJ6A-58-410D-33 L G22C-59-410C-33
Black (Code 16W)	R GJ6A-58-410D-08 L G22C-59-410C-08
Canary Yellow (Code 25C)	R GJ6A-58-410D-34 L G22C-59-410C-34
Crystal Silver (Code 22V)	R GJ6A-58-410D-67 L G22C-59-410C-67
New Light Blue (Code 28A)	R GJ6A-58-410D-90 L G22C-59-410C-90
Nordic Green (Code 27C)	R GJ6A-58-410D-97 L G22C-59-410C-97
Passion Orange (Code 27Y)	R GJ6A-58-410D-07 L G22C-59-410C-07
Sparkling Silver (Code 24E)	R GJ6A-58-410D-28 L G22C-59-410C-28
Strato Blue (Code 25E)	R GJ6A-58-410D-38 L G22C-59-410C-38
Titanium Gray (Code 29Y)	R GJ6A-58-410D-01 L G22C-59-410C-01
Velocity Red (Code 27A)	R GJ6A-58-410D-87 L G22C-59-410C-87
Winning Blue (Code 27B)	R GJ6A-58-410D-94 L G22C-59-410C-94
Paint to Match	R BP4R-58-410 L DE60-59-410B
4 Clip, Outer Handle¶	R GT2G-59-315 L GT2G-58-315
¶Included w/Outer Handle Assy	
5 Pad, Outside Handle	R BN8F-58-950B L BN8F-59-950B
6 Handle, Inside¶	R D351-58-330C-02 L D351-59-330C-02
¶Black listed, Order by Application	
7 Cover, Inside Handle	
Black	R D350-58-303A-02 L D350-59-303A-02
Corn Beige	R D350-58-303A-30 L D350-59-303A-30
8 Hinge, Upper	R E112-72-210A L E112-73-210A
9 Hinge, Lower	R E112-72-240 L E112-73-240
10 Check, Door	R/L BP4K-72-270D
11 Weatherstrip Assy, Door	
Hatchback	R BP4K-72-760B L BP4K-73-760B
Sedan	R BN8V-72-760C L BN8V-73-760C
12 Fastener, W/Strip¶	
Hatchback	R BP4K-72-762 L BP4K-73-762
Sedan	
No. 1	R BP4K-72-762 L BP4K-73-762
No. 2	R/L BN8V-72-762
13 Clip, Weatherstrip¶ (a)	
No. 1	R/L BC1D-58-762
No. 2	R/L BP4K-58-762
¶Included w/Door Weatherstrip Assy	

14 Welt, Seaming	R BP4K-68-913B L BP4K-68-914B
15 Weatherstrip Assy, Lower Door	R/L BP4K-72-76X
16 Clip, Weatherstrip¶ (a)	R/L BC1D-58-762
¶Included w/Lower Door Weatherstrip Assy (a) As Required	

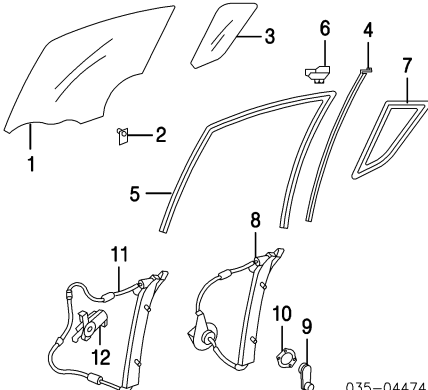
GLASS & PARTS HATCHBACK



035-04473

1 Glass, Rear Door Mazda	R BP4K-72-511A L BP4K-73-511A
2 Grommet, Glass	R/L D350-58-502
3 Guide, Glass	R BP4K-72-603 L BP4K-73-603
4 Run, Glass	R BP4K-72-605A L BP4K-73-605A
5 Regulator, Power	R BP4K-72-590B L BP4K-73-590B
6 Motor, Regulator	R G22C-59-58XB L GJ6A-58-58XB

GLASS & PARTS SEDAN



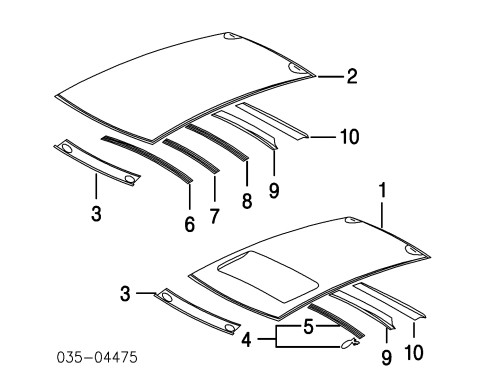
035-04474

1 Glass, Rear Door Mazda	R BN8V-72-511A L BN8V-73-511A
2 Grommet, Glass	R/L D350-58-502
3 Glass, Vent Mazda	R BN8V-72-661A L BN8V-73-661A
4 Bar, Division	R BN8V-72-602 L BN8V-73-602
5 Run, Channel	R BN8V-72-605 L BN8V-73-605
6 Protector, Channel	R BN8V-72-608 L BN8V-73-608
7 Weatherstrip, Vent	R BN8V-72-651 L BN8V-73-651
8 Regulator, Manual	R BP4L-72-560B L BP4L-73-560B
9 Handle, Regulator	
Black	R/L B25D-58-580A-02
Corn Beige	R/L B25D-58-580A-30
10 Escutcheon, Handle	
Black	R/L B001-58-582A-00
Corn Beige	R/L B001-58-582A-35
11 Regulator, Power	R BP4K-72-590B L BP4K-73-590B
12 Motor, Regulator	R G22C-59-58XB L GJ6A-58-58XB

MAZDA3 2004

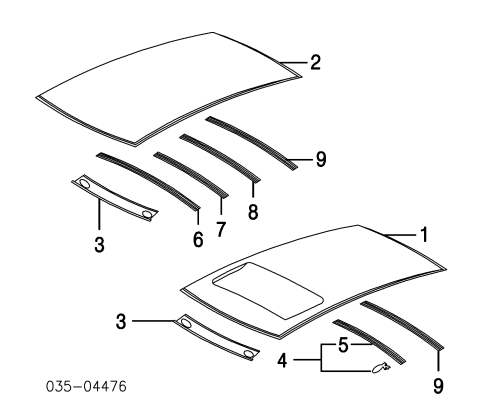
ROOF

SHEET METAL
HATCHBACK



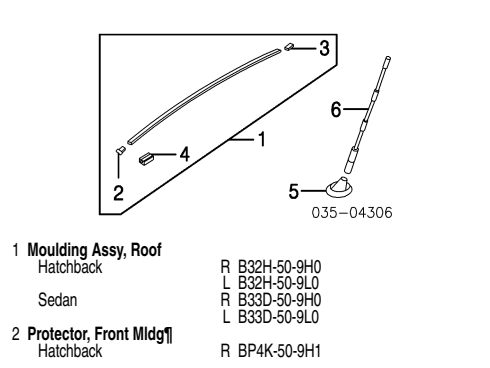
- 035-04475
- | | |
|--------------------------------------|--------------|
| 1 Panel, Roof w/Sunroof | BPYM-70-600 |
| 2 Panel, Roof w/o Sunroof | BPYK-70-600 |
| 3 Panel, Front Header | BP4K-70-640A |
| 4 Reinforcement Assy, Roof w/Sunroof | BP4M-70-66X |
| 5 Reinf, Roof | BP4K-70-663 |
| *Included w/Roof Reinforcement Assy | |
| 6 Reinf, Front Roof w/o Sunroof | BP4K-70-661 |
| 7 Reinf, Center Front w/o Sunroof | BP4K-70-662 |
| 8 Reinf, Center Rear w/o Sunroof | BP4K-70-663 |
| 9 Reinforcement, Rear w/o Sunroof | BP4K-70-664 |
| 10 Panel, Rear Header | BP4K-70-700B |

SHEET METAL
SEDAN



- 035-04476
- | | |
|--------------------------------------|--------------|
| 1 Panel, Roof w/Sunroof | BNYW-70-600 |
| 2 Panel, Roof w/o Sunroof | BNYV-70-600 |
| 3 Panel, Front Header | BP4K-70-641B |
| 4 Reinforcement Assy, Roof w/Sunroof | BN8W-70-66X |
| 5 Reinf, Roof | BN8V-70-663 |
| *Included w/Roof Reinforcement Assy | |
| 6 Reinf, Front Roof w/o Sunroof | BN8V-70-661 |
| 7 Reinf, Center w/o Sunroof | BN8V-70-662 |
| 8 Reinf, Rear w/o Sunroof | BN8V-70-663 |
| 9 Panel, Rear Header | BN8V-70-700 |

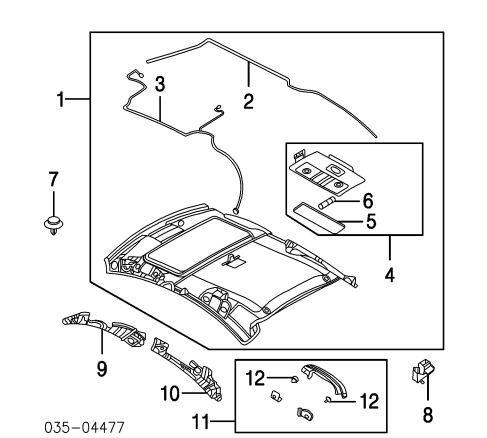
EXTERIOR TRIM



- 1 Moulding Assy, Roof Hatchback
- Sedan
- 2 Protector, Front Midg Hatchback

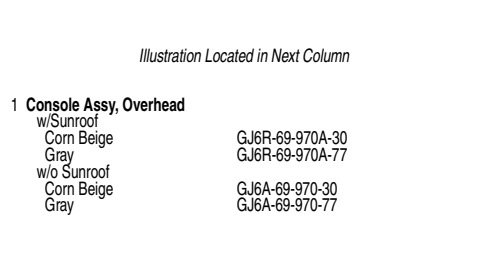
- Sedan
- 3 Protector, Rear Midg Hatchback
- Sedan
- 4 Protector, Inner Midg Hatchback
- No. 1 (3/Side)
- No. 2 (4/Side)
- Sedan (5/Side)
- 5 Antenna, Radio
- 6 Mast, Antenna

INTERIOR TRIM

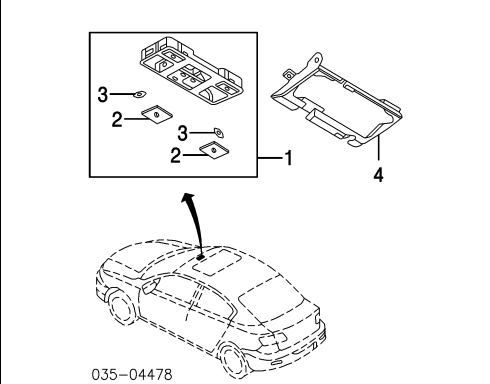


- 1 Headliner Assy Hatchback
- w/Sunroof
- w/o Sunroof
- Sedan
- w/Sunroof
- w/o Sunroof
- *Gray listed, Order by Application
- 2 Harness, Antenna (a) Hatchback
- w/Sunroof
- w/o Sunroof
- Sedan
- w/Sunroof
- w/o Sunroof
- 3 Harness, Roof Lamp (a) w/Sunroof
- w/o Sunroof
- 4 Lamp Assy, Room (a) Corn Beige
- Gray
- 5 Lens, Lamp (a) (b) 9370-05-100L
- 6 Bulb (a) (b) (a) Included w/Headliner Assy (b) Included w/Room Lamp Assy
- 7 Fastener, Headliner (5) Black
- Beige
- Gray
- 8 Adapter, Center Beige
- Corn Beige
- Gray
- 9 Pad, Front Impact R
- L
- 10 Pad, Rear Impact Hatchback
- Sedan
- 11 Handle Assy, Assist Front
- Rear
- 12 Cap, Assist Handle (a) Front (2)
- Rear (2/Side)
- *Gray listed, Order by Application (a) Included w/Assist Handle Assy

OVERHEAD CONSOLE

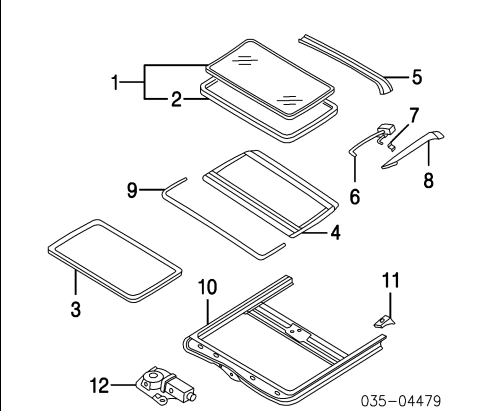


- 1 Console Assy, Overhead w/Sunroof
- Corn Beige
- Gray
- w/o Sunroof
- Corn Beige
- Gray



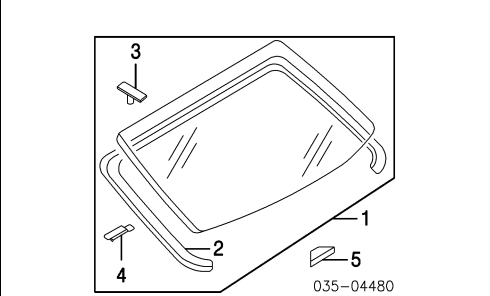
- 2 Lens, Console
- 3 Bulb Switch, Sunroof
- 4 Bracket, Console w/Sunroof
- w/o Sunroof

SUNROOF



- 1 Glass Assy, Sliding
- 2 W/Strip, Sunroof
- 3 Welt, Seaming Corn Beige
- Gray
- 4 Sunshade Corn Beige
- Gray
- 5 Rail, Drip
- 6 Link, Slide Stopper R
- L
- 7 Pin, Link R/L
- 8 Guide, Rail R/L
- 9 Deflector, Air
- 10 Frame, Sliding Roof
- 11 Pipe, Drain R
- L
- 12 Motor, Sliding Roof

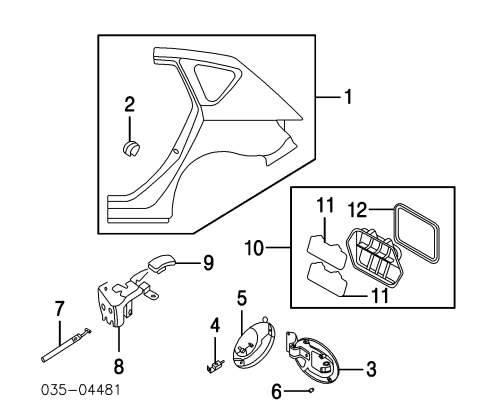
BACK WINDOW



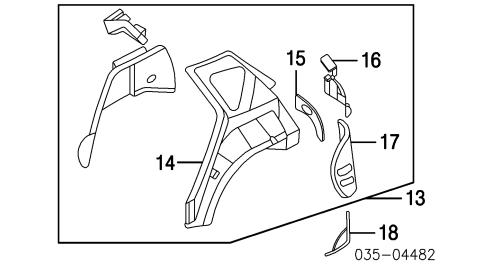
- 1 Glass Assy, Back Window Mazda
- 2 Moulding, Reveal
- 3 Pin, Glass Midg (4)
- 4 Terminal, Glass
- 5 Spacer, Glass

QUARTER PANEL

SHEET METAL
HATCHBACK

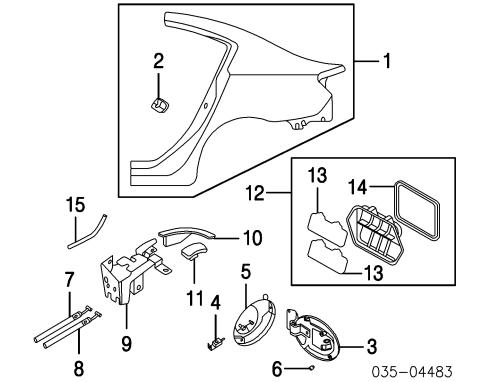


- 1 Panel Assy, Outer Quarter R BNYF-70-410A
L BNYF-71-410A
2 Plate, Nut[¶] (2/Side) R/L GE4T-70-46X
[¶]Included w/Outer Quarter Panel Assy
3 Door, Fuel Filler R BP4K-42-410D
4 Opener, Fuel Door R B095-56-890E
5 Spring, Fuel Door
To 1-1-04 R BP4K-42-452A
From 1-1-04 R BP4K-42-452B
6 Stopper, Fuel Door (2) R GJ6A-42-459
7 Cable, Fuel Door Opener R BP4K-56-880C
8 Lever, Opener BP4K-56-860A
9 Knob, Opener BP4K-56-862A-02
10 Chamber Assy, Extractor R/L BN8V-51-920
11 Valve, Extractor[¶] (2/Side) R/L D350-51-923
12 Gasket, Extractor[¶] R/L E016-51-922
[¶]Included w/Extractor Chamber Assy



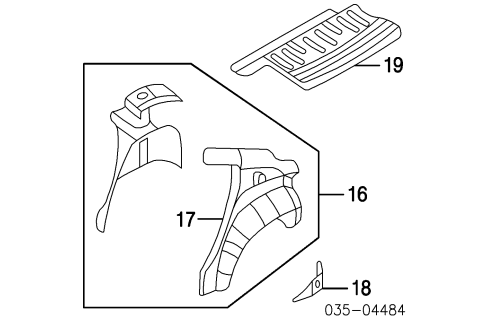
- 13 Panel Assy, Inner Quarter R BNYF-70-100
L BNYF-71-100
14 Panel, Inner Quarter[¶] R BP4K-70-110E
L BP4K-71-110F
15 Panel, Rear Side[¶] R BP4K-70-113A
L BP4K-71-113A
16 Reinf, Rear Pillar[¶] R BP4K-70-4H0A
L BP4K-71-4H0A
17 Reinf, Susp Housing[¶] R BP4K-70-120
L BP4K-71-120A
[¶]Included w/Inner Quarter Panel Assy
18 Panel, Rear Lower R BP4K-70-4A1
L BP4K-71-4A1

SHEET METAL
SEDAN



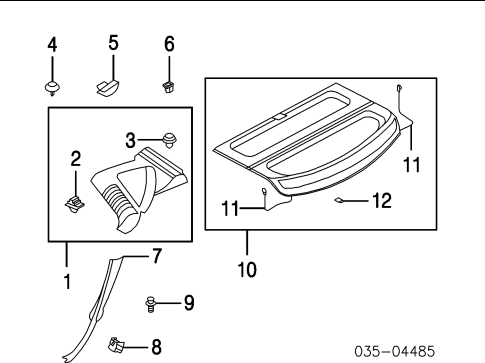
- 1 Panel Assy, Outer Quarter R BNYB-70-410
L BNYC-70-410
2 Plate, Nut[¶] (2/Side) R/L GE4T-70-46X

- [¶]Included w/Outer Quarter Panel Assy
3 Door, Fuel Filler R BN8V-42-410C
4 Opener, Fuel Door R B095-56-890E
5 Spring, Fuel Door
To 1-1-04 R BP4K-42-452A
From 1-1-04 R BP4K-42-452B
6 Stopper, Fuel Door (2) R GJ6A-42-459
7 Cable, Fuel Door Opener R BN8P-56-880A
8 Cable, Luggage Lid BN8P-56-870
9 Lever, Opener BN8P-56-860
10 Knob, Fuel Door Opener
Black BN8P-56-862-02
Corn Beige BN8P-56-862-30
11 Knob, Luggage Lid Opener
Black BN8P-56-861A-02
Corn Beige BN8P-56-861A-30
12 Chamber Assy, Extractor R/L BN8V-51-920
13 Valve, Extractor[¶] (2/Side) R/L D350-51-923
14 Gasket, Extractor[¶] R/L E016-51-922
[¶]Included w/Extractor Chamber Assy
15 Guard, Stone R BP4K-50-4P1A
L BP4K-50-4R1A



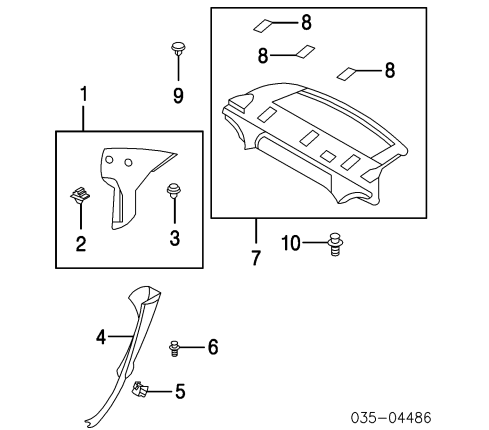
- 16 Panel Assy, Inner Quarter R BNYB-70-100
L BNYB-71-100
17 Panel, Rear Inner Quarter[¶] R BN8V-70-110B
L BN8V-71-110B
[¶]Included w/Inner Quarter Panel Assy
18 Panel, Rear Lower R BN8V-70-110B
L BN8V-71-110B
19 Panel, Package Tray BN8V-70-500C

INTERIOR TRIM
HATCHBACK



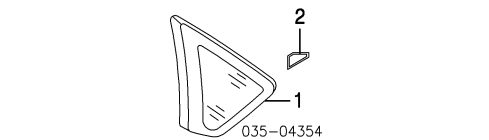
- 1 Trim Assy, Upper Quarter w/Side Curtain Air Bag R BP4K-68-250D-77
L BP4K-68-260E-77
w/o Side Curtain Air Bag R BP4L-68-250D-77
L BP4L-68-260E-77
Fastener, Trim
2 No. 1[¶] R/L B01A-68-AB1
3 No. 2 (4/Side)[¶] R/L GE4T-68-865A
4 No. 3 (2/Side)
Black R/L GJ21-68-885B-03
Corn Beige R/L GJ21-68-885B-36
[¶]Included w/Upper Quarter Trim Assy
5 Clip, Upper Trim R/L BP4K-68-AD2
6 Grommet R/L 9991-00-501
7 Trim, Wheelhouse R BP4K-68-760B-02
L BP4K-68-770B-02
8 Clip, Wheelhouse Trim R/L BN8V-68-AD2
9 Fastener, Trim[¶] R/L GJ21-68-885B-73
[¶]As Required
10 Tray Assy, Package Reversible Trunk Cover B32H-68-310E-02
Non-Reversible Trunk Cover BP4M-68-310E-02
11 Strap, Package Tray[¶] R/L BP4K-68-315
12 Hook, Tray[¶] B25H-68-323A
[¶]Included w/Package Tray Assy

INTERIOR TRIM
SEDAN



- 1 Trim Assy, Upper Quarter w/Side Curtain Air Bag Corn Beige R BN8V-68-250D-30
L BN8V-68-260D-30
Gray R BN8V-68-250D-77
L BN8V-68-260D-77
w/o Side Curtain Air Bag Corn Beige R BN8W-68-250D-30
L BN8W-68-260D-30
Gray R BN8W-68-250D-77
L BN8W-68-260D-77
Fastener, Trim[¶]
2 No. 1 R/L B01A-68-AB1
3 No. 2 (4/Side) R/L GE4T-68-865A
[¶]Included w/Upper Quarter Trim Assy
4 Trim, Wheelhouse
Black R BN8V-68-760C-02
Corn Beige R BN8V-68-770C-02
R BN8V-68-760C-30
L BN8V-68-770C-30
5 Clip, Wheelhouse Trim R/L BN8V-68-AD2
6 Fastener, Trim[¶] R/L GJ21-68-885B-02
Black R/L GJ21-68-885B-36
Corn Beige R/L GJ21-68-885B-73
[¶]As Required
7 Trim Assy, Package Tray BN8V-68-3A0F-02
Black BN8V-68-3A0F-30
8 Cover, Seat Belt[¶] (3) BN8V-68-3R1A-02
Black BN8V-68-3R1A-30
Corn Beige
[¶]Included w/Package Tray Trim Assy
Clip, Tray Trim[¶]
9 No. 1 GJ6A-68-AB1
10 No. 2 GJ21-68-885B-02
Black GJ21-68-885B-36
Corn Beige GJ21-68-885B-73
Gray
[¶]As Required

QUARTER GLASS



- 1 Glass, Quarter Mazda R BP4K-62-950B
L BP4K-63-950B
2 Fastener, Glass R/L D204-50-896A

LUGGAGE LID

- [¶]Illustration Located in Next Column
1 Lid, Luggage w/Spoiler BNYW-52-61XA
w/o Spoiler BNYV-52-61XA
2 Latch, Lid BN8P-56-820
3 Striker, Latch B33D-56-840
4 Cylinder Assy, Lid Lock[¶] w/Burglar Alarm System BNYP-76-230A
w/o Burglar Alarm System B3YD-76-230A
5 Clip, Lid Lock[¶] (a) H260-58-315
[¶]Included w/Complete Lock Set-listed in Steering Wheel/Column Section

MAZDA3 2004

LUGGAGE LID Cont'd

035-04487

(a) Included w/Lid Lock Cylinder Assy

6 Housing, Lock Cylinder	BP4K-62-498B
7 Hinge Assy, Lid	R BN8V-32-710B L BN8V-32-720B
8 Cushion, Hinge	R/L GJ6A-56-802A
9 Stopper, Hinge	R/L BN8V-56-802
10 Stay, Lid	w/Spoiler R/L BN8W-56-930 w/o Spoiler R/L BN8V-56-930A
11 Stopper, Lid	R/L GJ6E-56-802
12 Cover, Hole	B499-62-868
13 Weatherstrip, Lid	BN8V-56-951C

035-04488

14 Emblem Assy	BN8V-51-730A
15 Clip, Tubular (2)	LA01-51-958
*Included w/Emblem Assy	
16 Nameplate Assy	BN8V-51-710A
17 Clip, Tubular (3)	LA01-51-958
*Included w/Nameplate Assy	
18 Nameplate (Adhesive)	BN8V-51-721A
*3"	
19 Spoiler Assy, Rear	Arctic White (Code A4D) BN8V-51-960B-33 Black (Code 16W) BN8V-51-960B-08 Canary Yellow (Code 25C) BN8V-51-960B-34 Crystal Silver (Code 22V) BN8V-51-960B-67 New Light Blue (Code 28A) BN8V-51-960B-90 Nordic Green (Code 27C) BN8V-51-960B-97 Passion Orange (Code 27Y) BN8V-51-960B-07 Sparkling Silver (Code 24E) BN8V-51-960B-28 Strato Blue (Code 25E) BN8V-51-960B-38 Titanium Gray (Code 29Y) BN8V-51-960B-01 Velocity Red (Code 27A) BN8V-51-960B-87 Winning Blue (Code 27B) BN8V-51-960B-94
20 Protector, Spoiler Front	BN8V-51-979A
21 Protector, Spoiler Rear	BN8W-51-979
22 Gasket, Spoiler (4)	R/L EA01-50-812
*Included w/Rear Spoiler Assy	
23 Fastener, Spoiler (5)	BN8V-50-715A

Illustration Located in Next Column

24 Trim, Luggage Lid	BN8P-68-8W1A
25 Fastener, Trim	

LIFTGATE

SHEET METAL

035-04489

1 Shell, Gate	w/Spoiler BPNY-62-02X w/o Spoiler BPNY-62-02X
2 Weatherstrip, Liftgate	BP4K-62-761B
3 Valve, Shutter	R/L BS78-58-867A
4 Cushion, Stopper	R/L D001-62-873B
5 Tape, Protector	R/L G043-62-864A
6 Pad, Stopper	R/L GJ6A-56-994A
7 Hinge Assy, Liftgate	R/L D350-62-210
8 Gasket, Hinge	R/L D350-62-212
*Included w/Liftgate Hinge Assy	
9 Support, Liftgate	To 11-27-03 R BP4K-62-620B L BP4K-63-620B
	From 11-27-03 R BP4K-62-620C L BP4K-63-620C
10 Bolt, Stud	R/L D352-62-625
	Upper R/L S084-62-625A Lower
11 Latch, Liftgate	To 12-1-03 BP4L-62-310A
	From 12-1-03 BP4L-62-310B
12 Striker, Latch	D350-62-361
Cylinder, Liftgate Lock	N.A.
*Included w/Complete Lock Set-listed in Steering Wheel/Column Section	
13 Handle, Outer	BP4K-62-410A

EXTERIOR TRIM

Illustration Located in Next Column

1 Emblem Assy	BP4K-51-730A
2 Clip, Tubular (2)	LA01-51-958
*Included w/Emblem Assy	
3 Nameplate Assy	BP4K-51-710A
4 Clip, Tubular (3)	LA01-51-958
*Included w/Nameplate Assy	
5 Nameplate (Adhesive)	BN8V-51-721A
*3"	
6 Spoiler Assy, Rear	Arctic White (Code A4D) BP4K-51-960D-33 Black (Code 16W) BP4K-51-960D-08 Canary Yellow (Code 25C) BP4K-51-960D-34 Crystal Silver (Code 22V) BP4K-51-960D-67 Passion Orange (Code 27Y) BP4K-51-960D-07 Strato Blue (Code 25E) BP4K-51-960D-38 Titanium Gray (Code 29Y) BP4K-51-960D-01 Velocity Red (Code 27A) BP4K-51-960D-87

035-04490

Winning Blue (Code 27B)	BP4K-51-960D-94
7 Spoiler, Lower	BP4K-51-981D
8 Protector, Spoiler	No. 1 BP4K-51-979A
9 No. 2 (2/Side)	R/L BP4L-51-979A
10 No. 3	R/L BP4M-51-979
11 Protector, Rear Spoiler (10)	G14V-51-954
Gasket, Spoiler	No. 1 (4) B22H-50-818
	No. 2 EA01-50-812
*Included w/Rear Spoiler Assy	
14 Fastener, Spoiler	R/L BN8V-50-715A

INTERIOR TRIM

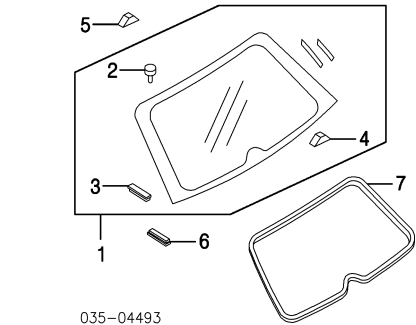
035-04492

1 Trim Assy, Upper Liftgate	BP4L-68-930B-02
2 Spring, Plate (2)	S47P-64-345
3 Clip, Upper Trim (a)	GJ12-68-865
*Included w/Upper Liftgate Trim Assy	
(a) As Required	
4 Trim Assy, Upper Side	R/L BP4K-68-940D-02
5 Clip, Side Trim (a)	R/L GJ12-68-865
*Included w/Upper Side Trim Assy	
(a) As Required	
6 Fastener, Side Trim (2/Side)	R/L GJ21-68-885B-02
7 Strap, Hanger	R/L BP4K-68-301A-02
8 Trim Assy, Lower	BP4K-68-960G-02
9 Cover, Hole	BP4K-68-962A-02
10 Cap, Hole	BP4K-68-949C-02
11 Plate, Lower Trim	BP4K-68-967A-02
Fastener, Lower Trim	No. 1 (6) GE4T-68-865A
	No. 2 (2) E120-68-AB1
*Included w/Lower Trim Assy	
14 Fastener, Upper	R/L GJ21-68-885B-02
15 Cover, Recess	GJ6A-68-966-02

GLASS & PARTS

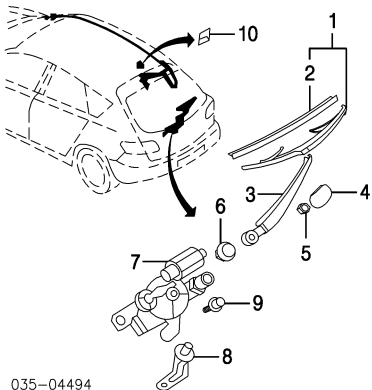
Illustration Located in Next Column

1 Glass Assy, Liftgate	Mazda BP4K-63-930B
2 Pin, Stud	No. 1 BP4L-63-938
	No. 2 BP4M-63-938
3 Fastener, Glass	BP4L-50-896
4 Spacer, Glass Lower	C001-50-897
*Included w/Liftgate Glass Assy	



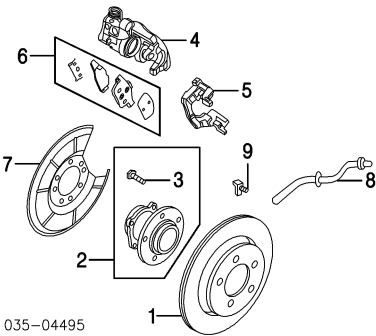
- 5 Spacer, Glass Upper C001-50-897
- 6 Fastener, Lower (2) D203-50-896A
- 7 Weatherstrip, Glass BP4K-50-899

WIPER SYSTEM

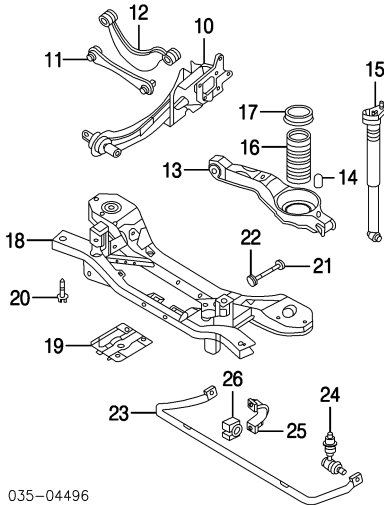


- 1 Blade Assy, Wiper BP4M-67-330A
- 2 Insert, Blade BP4M-67-333A
- 3 Arm, Wiper BP4K-67-421
- 4 Cover, Arm BP4M-67-395A
- 5 Nut, Arm 9994-00-801
- 6 Bushing, Arm BP4K-67-407A
- 7 Motor, Wiper BP4K-67-450
- 8 Bracket, Motor BP4K-67-34XA
- 9 Bolt, Motor (2) SLA1-13-366
- 10 Nozzle, Washer BP4N-67-510

REAR SUSPENSION



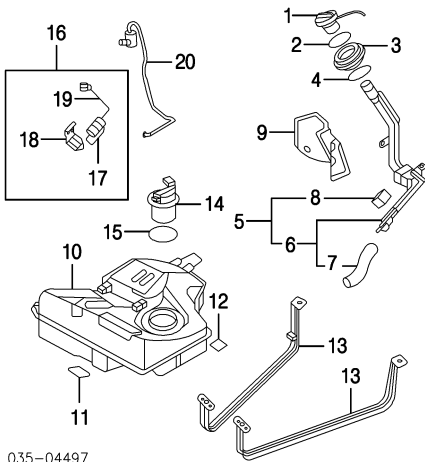
- 1 Rotor, Brake R/L BP4Y-26-251B
- 2.0L Eng R/L BP6Y-26-251C
- 2 Hub Assy Hatchback R/L BP4K-26-15XA
- w/ABS R/L BN8B-26-15XB
- Sedan R/L BP4K-26-15XA
- w/ABS R/L BN8B-26-15XB
- 3 Bolt, Hub (5/Side) R/L BP4K-33-062
- 4 Caliper, Brake R BPYK-26-61X
- L BPYK-26-71X
- 5 Support, Caliper R/L BPYK-26-28X
- 2.0L Eng R/L BPYS-26-28X
- 2.3L Eng BPYK-26-48Z
- 6 Pad Set, Brake R/L BP4K-26-261A
- 7 Shield, Splash R/L BP4L-43-980D
- 8 Hose, Brake
- 9 Sensor, Rear ABS-See ABS/Brakes Section



- 10 Knuckle R BP4K-28-200E
- L BP4K-28-250E
- 11 Link, Lateral R/L BN8B-28-500
- 12 Arm, Upper Control R/L BP4K-28-C10B
- 13 Arm, Lower Control R/L BN8B-28-300
- 14 Stopper, Bumper R/L BP4K-28-1B0A
- 15 Strut R/L BP4K-28-910D
- 16 Spring, Coil R/L BP4K-28-011B
- 17 Seat, Spring R/L BP4K-28-012A
- 18 Crossmember, Susp BP4K-28-800D
- 19 Bracket, Crossmember R/L BP4K-28-8C1C
- 20 Bolt, Crossmember R/L 9YA0-21-20J
- 21 Bolt, Adjust R/L BP4K-28-66ZB
- 22 Plate, Cam R/L BP4K-28-473A
- 23 Bar, Stabilizer
- 15" Wheels B32L-28-151A
- 16" Wheels, 17" Wheels BP4K-28-151C
- 24 Link, Stabilizer R/L BP4K-28-170C
- 25 Bushing, Stabilizer Bar R/L BP4K-28-156C
- 26 Bracket, Stabilizer Bar R/L BP4K-28-155B

FUEL TANK

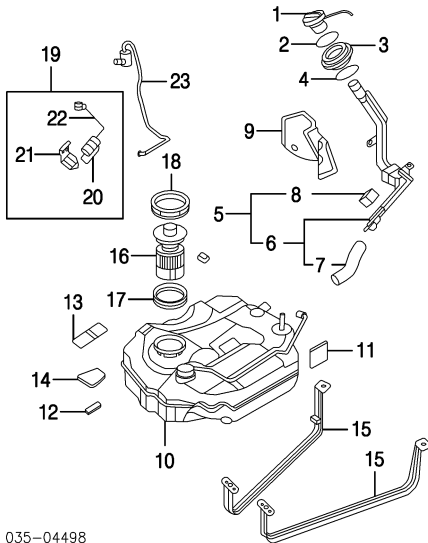
2.0L ENG W/CALIF EMISSION



- 1 Cap, Filler BN8F-42-250A
- 2 Gasket, Upper GJ6A-42-252A
- 3 Cover, Dust B32H-42-241C
- 4 Gasket, Lower BP4K-42-252
- 5 Pipe Assy, Filler BN8B-42-280A
- 6 Joint Assy BN8B-42-21X
- 7 Hose, Joint (a) BN8B-42-231
- 8 Pad, Filler Pipe BP4K-42-762
- 9 Protector, Filler Pipe BN8B-42-298
- 10 Tank, Fuel BN8B-42-110A
- 11 No. 1 (2) BN8B-42-767A
- 12 No. 2 (3) BN8B-42-761
- 13 Band, Tank R BN8B-42-710A
- L BN8B-42-720A
- 14 Gauge & Pump, Fuel LF67-13-35X
- 15 Gasket, Fuel Pump BN8B-42-165
- 16 Valve Assy, Solenoid BN8B-42-59XC

- 17 Sensor, Fuel Tank LF66-18-581
- 18 Bracket, Sensor LF66-18-586B
- 19 Wire, Sensor LF66-18-791
- 20 Hose, Sensor BN8B-42-56XB

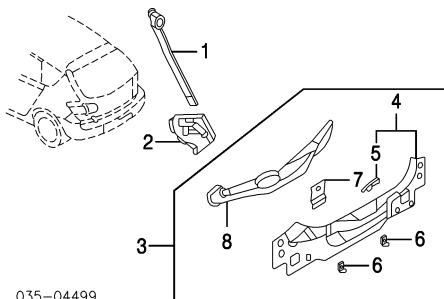
2.0L ENG W/O CALIF EMISSION 2.3L ENG



- 1 Cap, Filler BN8F-42-250A
- 2 Gasket, Upper GJ6A-42-252A
- 3 Cover, Dust B32H-42-241C
- 4 Gasket, Lower BP4K-42-252
- 5 Pipe Assy, Filler BN8F-42-21XB
- 6 Joint Assy BN8F-42-21X
- 7 Hose, Joint (a) BN8F-42-231
- 8 Pad, Filler Pipe BP4K-42-762
- 9 Protector, Filler Pipe BN8B-42-298
- 10 Tank, Fuel BN8F-42-110
- 11 No. 1 (1) BN8F-42-761
- 12 No. 2 (3) S31F-42-761A
- 13 No. 3 (2) BP4K-42-761
- 14 No. 4 R BP4K-42-764
- L GJ6A-42-763
- R BP4K-42-710A
- L BP4K-42-720A
- 15 Band, Tank LF66-13-35XA
- 16 Gauge & Pump, Fuel N.A.
- 17 Gasket, Fuel Pump N.A.
- 18 Nut, Union BN8B-42-59XC
- 19 Valve Assy, Solenoid LF66-18-581
- 20 Sensor, Fuel Tank LF66-18-586B
- 21 Bracket, Sensor LF66-18-791
- 22 Wire, Sensor BN8B-42-56XB
- 23 Hose, Sensor

REAR BODY

SHEET METAL HATCHBACK



- 1 Rail, Rear R BPYK-70-44Y
- L BPYK-71-44Y
- 2 Plate, Corner R BP4K-70-481
- L BP4K-71-481
- 3 Panel Assy, Rear End B32H-70-750A
- 4 Panel Assy, Rear B32H-70-75XA
- 5 Reinf, Rear Panel (a) R/L BP4K-70-752
- 6 Bracket, Rear Panel R/L BP4K-70-753
- 7 Reinf, Latch Striker BP4K-70-780

MAZDA3 2004

REAR BODY Cont'd

SHEET METAL

HATCHBACK Cont'd

8 Crossmember, Rear Panel

BP4K-70-761

Included w/Rear End Panel Assy

15

16

9

16

15

10

11

12

13

12

14

10

035-04501

9 Pan Assy, Luggage Compartment

BN8F-53-710A

10 Reinf, Side

R BP4K-53-916

L BP4K-54-916

11 Reinf, Seat Mounting

R BP4K-53-7K0A

L BP4K-54-7K0A

12 Bracket, Seat Mounting

R/L BP4K-53-78XA

13 Bracket, Spare Wheel

8531-53-790

14 Bracket, Hook

BP4K-54-890A

Included w/Luggage Compartment Pan Assy

15 Reinforcement Assy, Floor

R BN8F-56-37YB

L BN8F-56-37ZC

16 Bracket, Seat

R/L BN8F-53-78XA

Included w/Floor Reinforcement Assy

21

22

23

19

18

17

20

24

035-04502

17 Crossmember, Front

BP4K-53-900C

18 Crossmember, Rear Center

BP4K-53-920

19 Crossmember, Rear Side

R BP4K-53-93ZA

L BP4K-54-93ZA

20 Sidemember Assy, Rear

R BNY0-53-810D

L BNY0-54-810D

21 Bracket, Link

R BP4K-53-830A

L BP4K-54-830A

22 Gusset, Sidemember

R BP4K-53-84X

L BP4K-54-84X

23 Bracket, Hook

R BP4K-53-890

L BP4K-54-89X

24 Bracket, Bumper

R BP4K-53-890

L BP4K-54-89X

Included w/Rear Sidemember Assy

SHEET METAL

SEDAN

1 Rail, Rear

R BNYV-70-440

L BNYV-71-440

2 Plate, Corner

R BNYV-70-480A

L BNYV-71-480A

3 Panel Assy, Rear End

B33D-70-750A

4 Panel Assy, Rear

B33D-70-75XA

5 Reinf, Rear Panel (a)

R/L BP4K-70-752

(a) Included w/Rear Panel Assy

6 Bracket, Rear Panel

R/L BP4K-70-753

035-04503

3

4

9

9

7

5

8

6

035-04503

7 Reinf, Latch Striker

BN8V-70-780

8 Crossmember, Rear Panel

BN8V-70-761

9 Bracket, Trim

R/L C100-70-446A

Included w/Rear End Panel Assy

16

17

10

17

16

11

12

13

14

13

15

11

035-04504

10 Pan Assy, Luggage Compartment

BN8F-53-710A

11 Reinf, Side

R BP4K-53-916

L BP4K-54-916

12 Reinf, Seat Mounting

R BP4K-53-7K0A

L BP4K-54-7K0A

13 Bracket, Seat Mounting

R/L BP4K-53-78XA

14 Bracket, Spare Wheel

8531-53-790

15 Bracket, Hook

BP4K-54-890A

Included w/Luggage Compartment Pan Assy

16 Reinforcement Assy, Floor

R BN8F-56-37YB

L BN8F-56-37ZC

17 Bracket, Seat

R/L BN8F-53-78XA

Included w/Floor Reinforcement Assy

22

23

24

20

19

21

25

035-04505

18 Crossmember, Front

BP4K-53-900C

19 Crossmember, Rear Center

BP4K-53-920

20 Crossmember, Rear Side

R BP4K-53-93ZA

L BP4K-54-93ZA

21 Sidemember Assy, Rear

R BNY0-53-810D

L BNY0-54-810D

22 Bracket, Link

R BP4K-53-830A

L BP4K-54-830A

23 Gusset, Sidemember

R BP4K-53-84X

L BP4K-54-84X

24 Bracket, Hook

R BP4K-53-890

L BP4K-54-89X

25 Bracket, Bumper

R BP4K-53-890

L BP4K-54-89X

Included w/Rear Sidemember Assy

INTERIOR TRIM

HATCHBACK

8

1

2

3

11

9

7

4

5

12

12

10

11

035-04506

1 Trim Assy, Rear Panel

BP4K-68-89XB-02

2 Cover, End

BP4K-68-893A-02

Included w/Rear Panel Trim Assy

3 Bezel, Lock

BP4K-68-894B-02

4 Fastener

GJ21-68-885B-02

As Required

5 Trim Assy, Upper Side

R BP4K-68-84ZD-02

L BP4K-68-86ZE-02

6 Spring, Plate (2/Side)

R/L LB82-64-345

Included w/Upper Side Trim Assy

7 Cover, Trim

R/L BP4K-68-843B-02

8 Trim Assy, Lower

R/L B32H-68-850D-02

Reversible Trunk Cover

R BP4K-68-850D-02

Non-Reversible Trunk Cover

9 Cover, Lamp

L BN8F-68-870C-02

10 Lid, Trunk Side

R BP4K-68-853B-02

11 Clip, Trim

L BP4K-68-8V0B-02

R/L GJ12-68-865

Included w/Lower Trim Assy

12 Fastener, Side Trim

R/L GJ21-68-885B-02

As Required

13

14

15

16

17

18

19

20

21

035-04507

Cover, Trunk

Reversible

13 Rear

BP4K-68-8H0B-02

14 Front

BP4K-68-83XD-02

15 Cover Assy, Rear

Non-Reversible

BN8F-68-81XC-02

16 Strap, Cover

R/L B28V-68-3B0

Included w/Rear Cover Assy

17 Pad, Lower

BP4K-68-682A

18 Board, Floor Pan Center Rear

Reversible Trunk Cover

To 11-1-03

B32H-68-8F0A

From 11-1-03

B32H-68-8F0B

Non-Reversible Trunk Cover

BP4K-68-8F0D

19 Board, Floor Pan Center Front

Reversible Trunk Cover

To 10-1-03

B32H-68-8E0C-02

From 10-1-03

B32H-68-8E0D-02

Non-Reversible Trunk Cover

To 10-1-03

BP4K-68-8E0C-02

From 10-1-03

BP4K-68-8E0D-02

20 Mat, Luggage Compt

BN8F-68-670F-02

21 Bezel, Lever

BP4K-68-6F1C-02

INTERIOR TRIM

SEDAN

6

1

2

7

8

4

5

9

3

10

035-04508

1 Trim, Rear Panel

BN8V-68-89XD

2 Bezel, Lock

BN8V-68-894D

3 Trim, Side

R B33D-68-850B

L B33D-68-870B

L BN8V-68-8V0-02

4 Lid, Trunk Side

5 Fastener, Trim

Black

GJ21-68-885B-02

Corn Beige

GJ21-68-885B-36

Gray

GJ21-68-885B-73

As Required

6 Cover, Rear

BN8V-68-81XD

7 Pad, Lower

BP4K-68-682A

8 Board, Floor

2.0L Eng

BN8V-68-83XC

2.3L Eng

BN8W-68-83XC

9 Mat, Luggage Compt

Black

BN8F-68-670F-02

Corn Beige

BN8F-68-670E-30

10 Bezel, Lever

Black

BP4K-68-6F1C-02

Corn Beige

BP4K-68-6F1C-30

18

Labor Times Shown are for Replacement with New OEM Undamaged Parts on New Undamaged Vehicles.

Comments or suggestions? Need assistance? Call 1-800-854-7030 or 858-578-6550. Ext. 8220. Fax 1-888-256-7969 or 858-549-0629.

madpi1_g01_

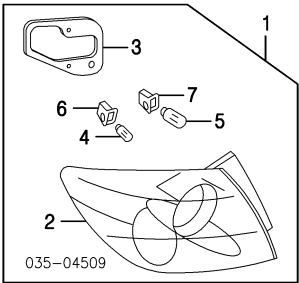
Page 18—April 22, 2004—13:28:33—Version

Manufacturer

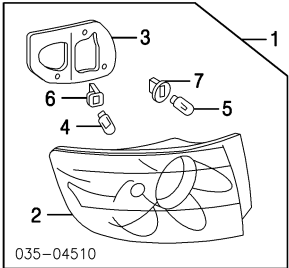
REAR LAMPS
COMBINATION LAMP
HATCHBACK

Illustration Located in Next Column

- | | |
|--------------------------|-----------------|
| 1 Lamp Assy, Combination | R BN8F-51-150D |
| | L BN8F-51-160D |
| 2 Lens & Body | R BN8F-51-170C |
| | L BN8F-51-180C |
| 3 Gasket, Lamp | R BP4K-51-153B |
| | L BP4K-51-163B |
| 4 Bulb, Outer | R/L 9970-08-215 |
| 5 Bulb, Inner | R/L 9970-06-210 |
| 6 Socket, Outer | R/L G14S-51-3E7 |
| 7 Socket, Inner | R/L GF3H-51-3E7 |
- ⌘Included w/Combination Lamp Assy

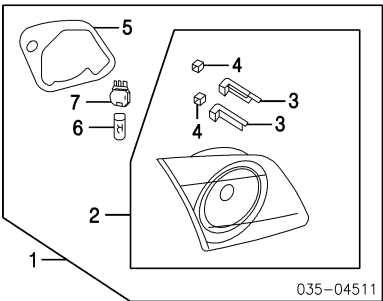


COMBINATION LAMP
SEDAN



- | | |
|--------------------------|-----------------|
| 1 Lamp Assy, Combination | R BN8R-51-150C |
| Std Type Bumper | L BN8R-51-160C |
| | R BN8P-51-150C |
| | L BN8P-51-160C |
| 2 Lens & Body | R BN8R-51-170C |
| Sport Type Bumper | L BN8R-51-180D |
| | R BN8P-51-170C |
| Std Type Bumper | L BN8P-51-180C |
| 3 Gasket, Lamp | R/L BN8V-51-163 |
| 4 Bulb, Outer | R/L 9970-08-215 |
| 5 Bulb, Inner | R/L 9970-06-210 |
| 6 Socket, Outer | R/L G14S-51-3E7 |
| 7 Socket, Inner | R/L GF3H-51-3E7 |
- ⌘Included w/Combination Lamp Assy

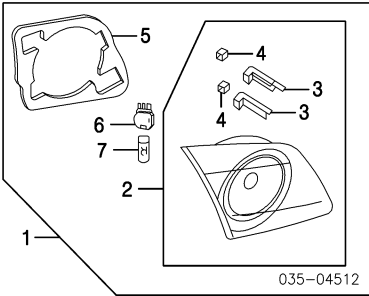
BACK-UP LAMP
HATCHBACK



- | | |
|------------------------------|------------------|
| 1 Lamp Assy, Back-Up | R BN8F-51-3F0C |
| | L BN8F-51-3G0C |
| 2 Lens & Body Assy | R BN8F-51-3H0B |
| | L BN8F-51-3J0B |
| 3 Bracket, Lamp (a) (2/Side) | R/L BP4K-51-3K7A |
| 4 Nut, Flange (a) (2/Side) | R/L 9994-00-503 |

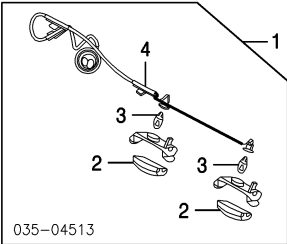
- (a) Included w/Lens & Body Assy
- | | |
|----------------|-----------------|
| 5 Gasket, Lamp | R BP4K-51-3H8 |
| | L BP4K-51-3J8 |
| 6 Bulb | R/L 9970-06-210 |
| 7 Socket | R/L G14S-51-3B7 |
- ⌘Included w/Back-Up Lamp Assy

BACK-UP LAMP
SEDAN



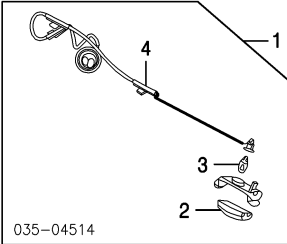
- | | |
|------------------------------|-----------------|
| 1 Lamp Assy, Back-Up | R BN8R-51-3F0C |
| Sport Type Bumper | L BN8R-51-3G0C |
| Std Type Bumper | R BN8P-51-3F0C |
| | L BN8P-51-3G0C |
| 2 Lens & Body Assy | R BN8R-51-3H0B |
| | L BN8R-51-3J0B |
| 3 Bracket, Lamp (a) (2/Side) | R/L BN8V-51-3K7 |
| 4 Nut, Flange (a) | R/L 9994-00-503 |
- (a) Included w/Lens & Body Assy
- | | |
|----------------|-----------------|
| 5 Gasket, Lamp | R BN8V-51-3H8 |
| | L BN8V-51-3J8 |
| 6 Bulb | R/L 9970-06-210 |
| 7 Socket | R/L GF3H-51-3E7 |
- ⌘Included w/Back-Up Lamp Assy

LICENSE LAMP
HATCHBACK



- | | |
|----------------------|------------------|
| 1 Lamp Assy, License | BN8F-51-270B |
| 2 Lens | R/L BP4K-51-274A |
| 3 Bulb | R/L 0000-11-0194 |
| 4 Socket & Wire | BN8F-51-26XB |
- ⌘Included w/License Lamp Assy

LICENSE LAMP
SEDAN

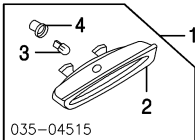


- | | |
|----------------------|--------------|
| 1 Lamp Assy, License | BN8P-51-270C |
| 2 Lens | BP4K-51-274A |
| 3 Bulb | 0000-11-0194 |
| 4 Socket & Wire | BN8P-51-26XB |
- ⌘Included w/License Lamp Assy

HIGH MOUNT STOP LAMP
HATCHBACK

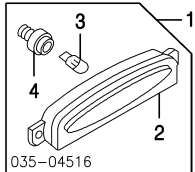
Illustration Located in Next Column

- | | |
|-------------------|--------------|
| 1 Lamp Assy, Stop | BP4K-51-580B |
|-------------------|--------------|



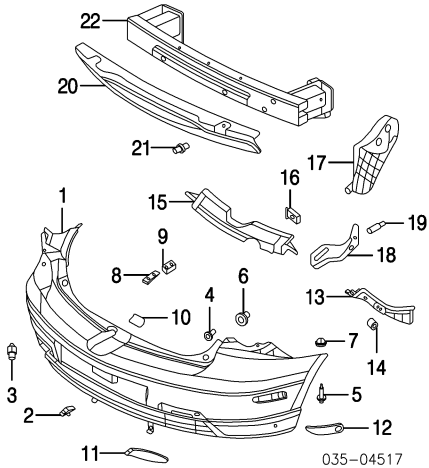
- | | |
|---------------|--------------|
| 2 Lens & Body | BP4K-51-593B |
| 3 Bulb | 0000-11-0921 |
| 4 Socket | D350-51-584 |
- ⌘Included w/Stop Lamp Assy

HIGH MOUNT STOP LAMP
SEDAN



- | | |
|-------------------|--------------|
| 1 Lamp Assy, Stop | BN8V-51-580B |
| 2 Lens & Body | BN8V-51-593A |
| 3 Bulb | 0000-11-0921 |
| 4 Socket | D350-51-584 |
- ⌘Included w/Stop Lamp Assy

REAR BUMPER
HATCHBACK



- | | |
|------------------------------|------------------|
| 1 Cover, Rear (P) | BN8F-50-221J-AA |
| (P) Paint to Match | |
| 2 Clip, Cover (4) | GD7A-50-EA1 |
| 3 Rivet, Cover | R/L B092-51-833 |
| Screw, Cover | |
| 4 No. 1 | R/L GA2A-50-0Z6 |
| 5 No. 2 | R/L 9CF6-00-516B |
| Grommet, Screw | |
| 6 No. 1 | R/L H260-50-6K8 |
| 7 No. 2 | R/L 9CF6-00-516B |
| 8 Pin, Locator | R GJ6A-50-1K5 |
| | L GJ6B-50-1K5 |
| 9 Grommet | R/L BP4K-50-ES1 |
| 10 Seal, Rubber | W612-50-2G2 |
| 11 Reflector, Rear | R BN8R-51-5L0 |
| | L BN8R-51-5M0 |
| 12 Reflector, Side | R D350-51-5L0C |
| | L D350-51-5M0C |
| 13 Retainer, Cover Side | R BP4K-50-2H1C |
| | L BP4K-50-2J1C |
| 14 Rivet, Retainer (2/Side) | R/L GJ6A-50-0Z1 |
| 15 Retainer, Cover Center | BN8F-50-2R1 |
| 16 Clip, Center Retainer (4) | GJ21-50-049 |
| 17 Shield, Splash | R B32H-50-341C |
| | L B32H-50-351C |
| 18 Bracket, Splash Shield | R BN8F-50-342A |
| | L BN8F-50-352A |
| 19 Rivet, Bracket (2/Side) | R/L BN8F-50-355 |
| 20 Filler, Bumper | BN8F-50-311B |
| 21 Fastener, Filler | R/L FD01-68-AC3 |
| 22 Bar, Reinforcement | BN8F-50-260B |